

---

# BIO-PLEX IMPORT MODULE

Version 1.2.0

User Guide

## COPYRIGHT

### PLA 3.0

© 2006-2018 Stegmann Systems GmbH, Rodgau, Germany. All rights reserved.

The Stegmann Systems products referred to in this document are also copyrighted, and all rights are reserved by Stegmann Systems and/or its licensors, if any. This manual may not, in whole or in part, be copied, translated, or reduced to any electronic medium or machine-readable form without prior consent, in writing, from Stegmann Systems.

The information in this manual is subject to change without notice, and Stegmann Systems assumes no responsibility for any errors that may appear in this document. The references in this manual to specific platforms supported are subject to change.

Java and all Java-based marks are trademarks or registered trademarks of Oracle, Inc. in the U.S. and other countries.

Any other trademarks or service marks contained herein are the property of their respective owners. PLA 3.0 includes software developed by the Apache Software Foundation, <http://www.apache.org/>, Copyright 1999-2014 The Apache Software Foundation. All rights reserved.

PLA 3.0 uses libraries that are subject to the Lesser GNU Public License (LGPL) Version 2.1 (the "License"); you may not use these files except in compliance with the License. A copy of the License is distributed in the same folder as the respective file. Software distributed under the License is distributed on an "AS IS" basis, WITHOUT WARRANTY OF ANY KIND, either express or implied. See the License for the specific language governing rights and limitations under the License. All rights reserved.

## CONTACT

Stegmann Systems GmbH  
Raiffeisenstr. 2 // C1, C2  
63110 Rodgau  
Germany

Phone: +49 6106 770100

Fax: +49 6106 77010190

[www.bioassay.de](http://www.bioassay.de)

[support@bioassay.de](mailto:support@bioassay.de)

TABLE OF CONTENTS

Welcome ..... 4

Overview ..... 5

System Requirements ..... 5

Import Documents Using The Bio-Plex Import Module..... 5

Manage Configurations ..... 12

    Standard Configuration Options ..... 15

        General ..... 15

            Name ..... 15

            Settings..... 16

        Advanced Configuration Options..... 17

            Define Available Configuration Profiles..... 17

            Prevent Configuration of Configuration Profiles..... 18

Installation..... 19

    Setup ..... 19

    Package Management..... 21

## WELCOME

Welcome to the Bio-Plex Import Module User Guide. This guide is intended for users, functional administrators of PLA, and system administrators.

It describes all aspects of the installation, configuration, and usage of the Bio-Plex Import Module.

## HOW TO USE THIS GUIDE

The structure of this guide is as follows:

### **System requirements (System administrators and PLA administrators)**

- Requirements of the Import Module

### **Step by Step Guide: Acquire data with the Import Module (PLA users)**

- Acquire data
- Manage configurations

### **Installation (System administrators)**

- Installation of the Import Module

## OVERVIEW

The Bio-Plex Import Module allows you to create new Quantitative Response Assays and import measured values of Bio-Plex files into the dataset. The Bio-Plex Import Module analyzes the data of XML files that were created with the Bio-Plex Manager software.

A single import format is available for Bio-Plex Import Module:

**Bio-Plex (\*.xml)** – Allows importing data from Bio-Plex files.

## SYSTEM REQUIREMENTS

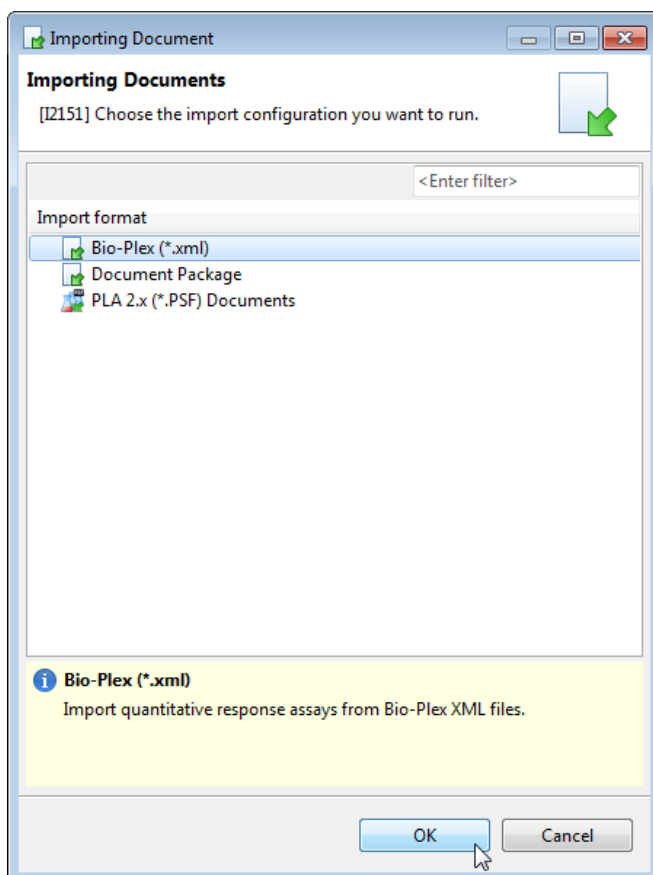
The Bio-Plex Import Module version 1.2.0 requires PLA 3.0.4.

## IMPORT DOCUMENTS USING THE BIO-PLEX IMPORT MODULE

The Bio-Plex Import Module allows you to create one or more Quantitative Response Assays and enrich the datasets with measured values in a single step.

To start an import process, select the target folder and select Import from the context or file menu.

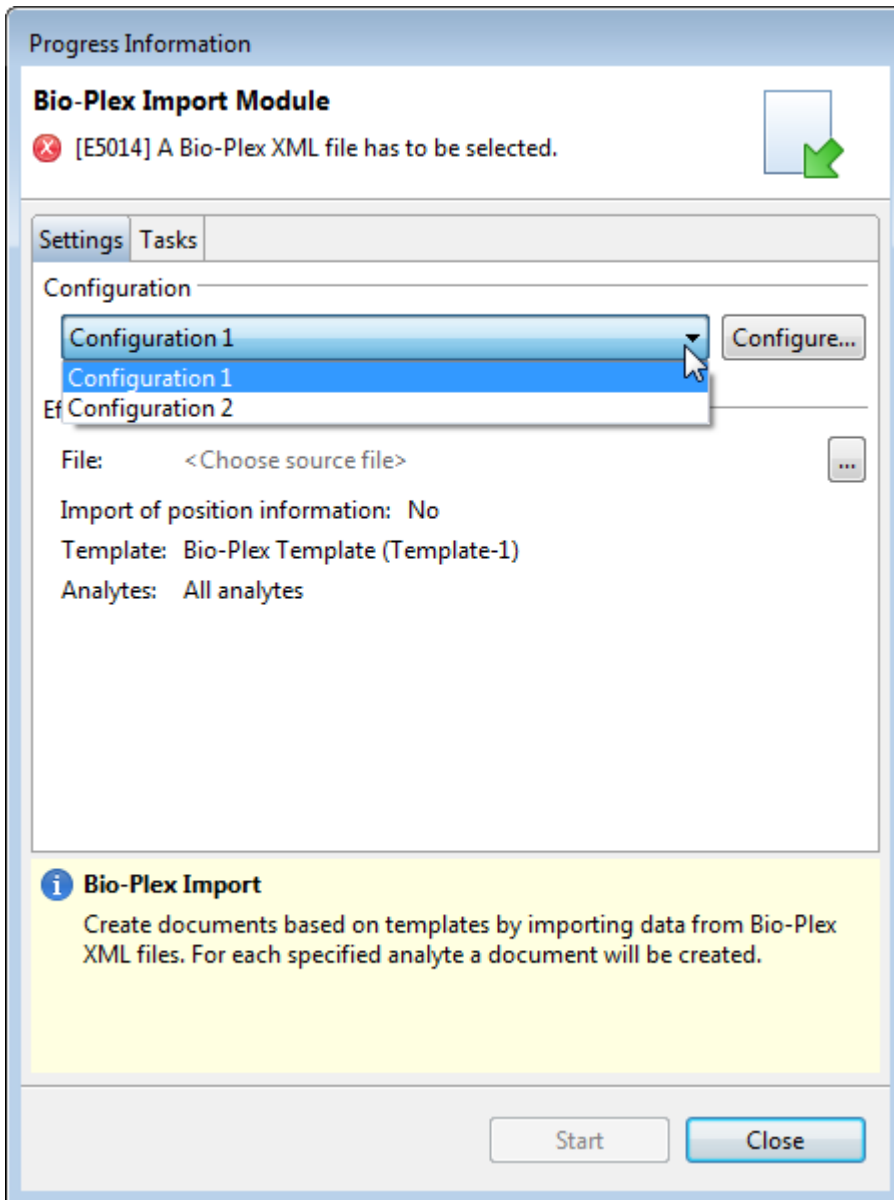
Select the entry with the name 'Bio-Plex (\*.xml)' and click **OK**.



## Bio-Plex Import Module - User Guide

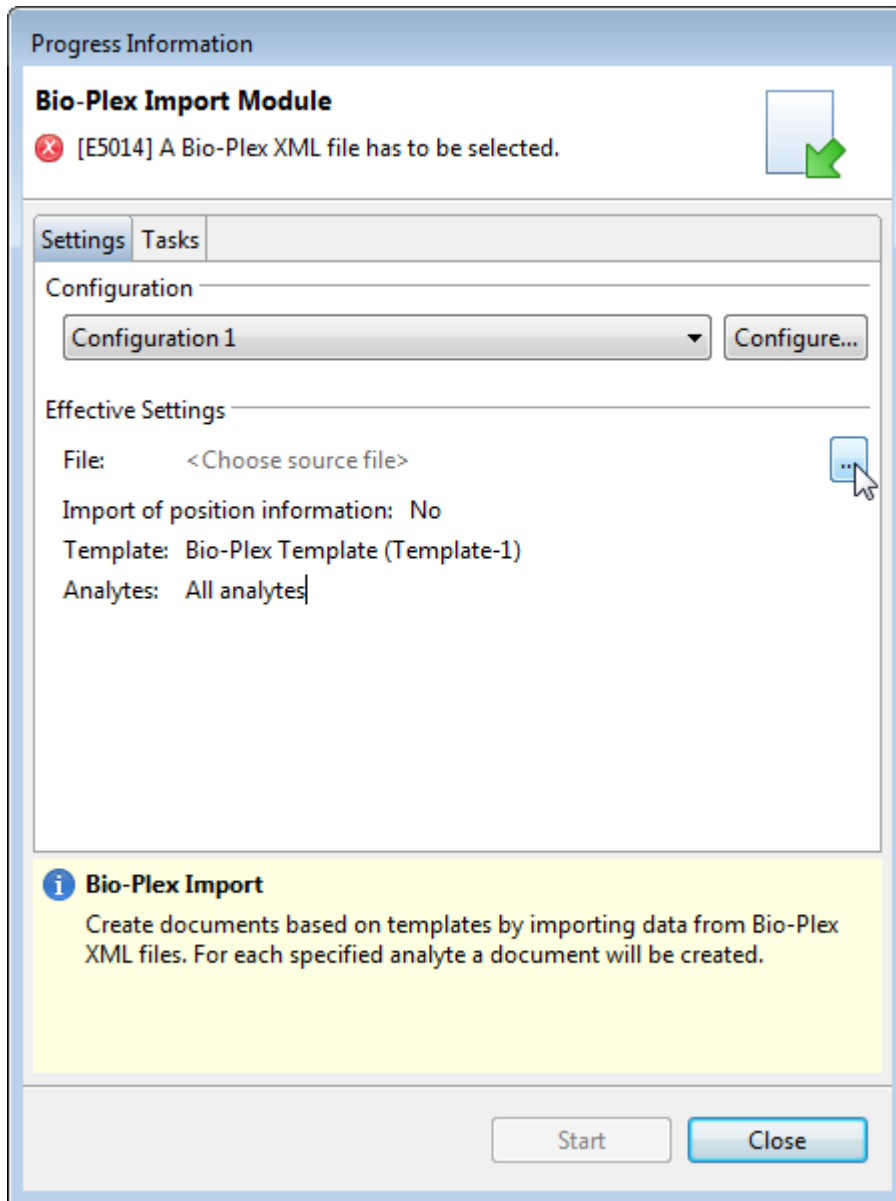
You can select a configuration profile using the drop-down menu of the Bio-Plex Import dialog.

If there is no configuration profile listed, you have to create one (see chapter Manage Configurations).

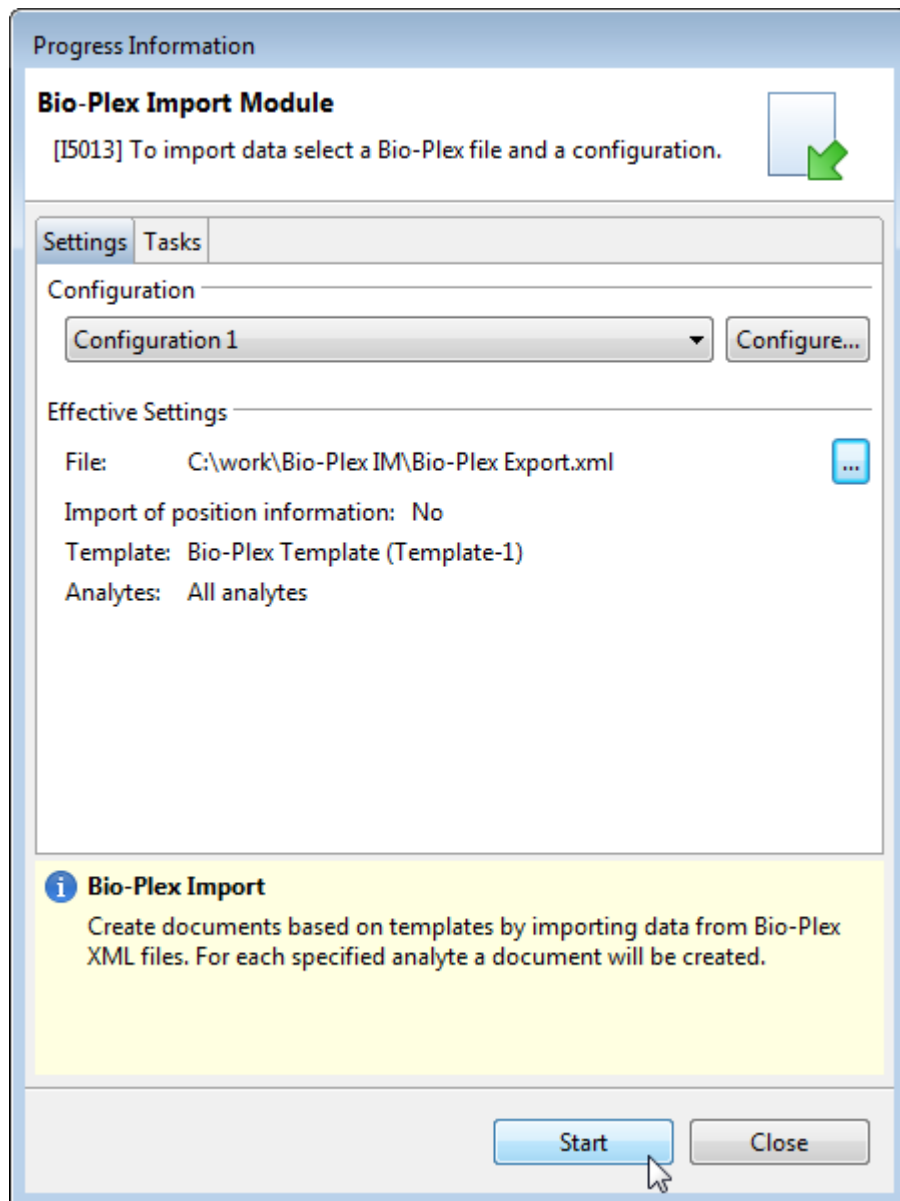


## Import Documents Using The Bio-Plex Import Module

After selecting a configuration profile, use the ... button to select an XML file that was created with Bio-Plex Manager.



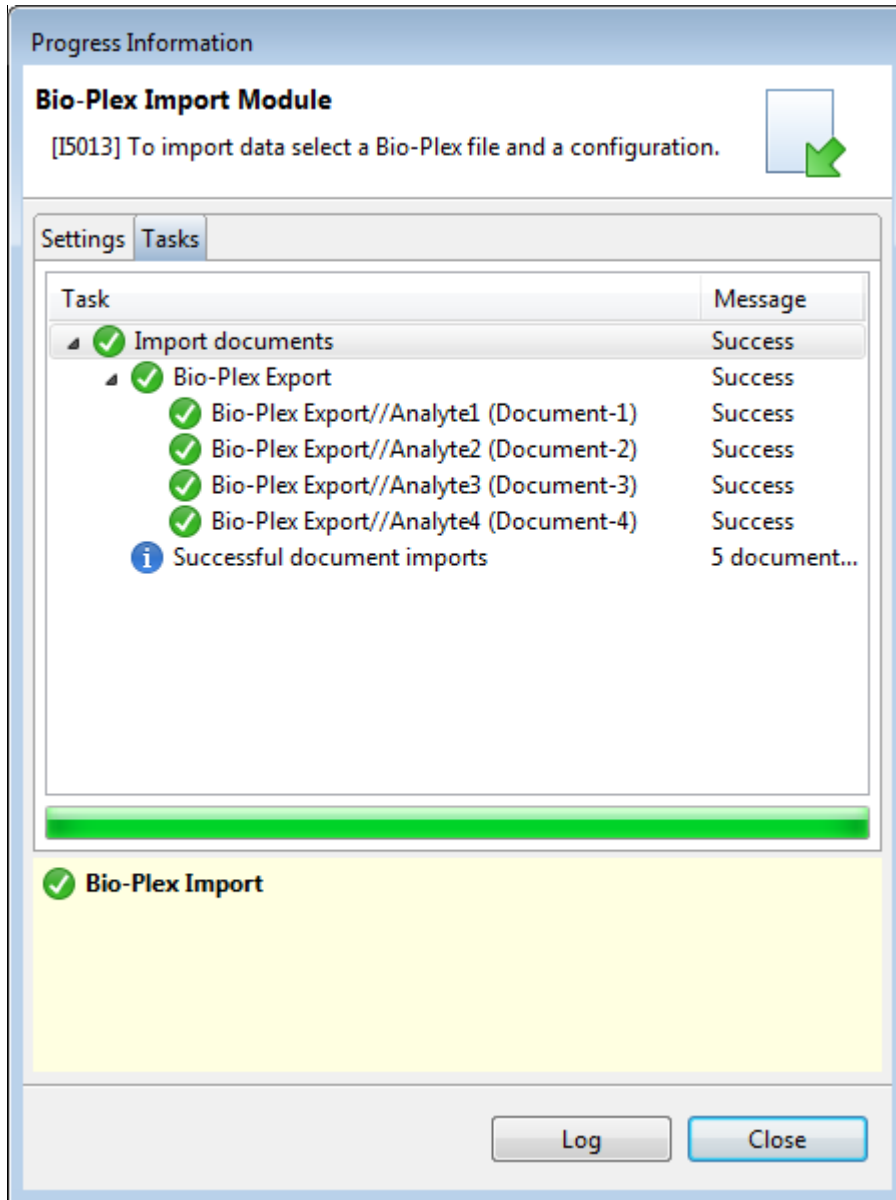
After selecting a configuration and a Bio-Plex XML file, you can start the import process by clicking **Start**. The effective settings are set by the configuration profile.





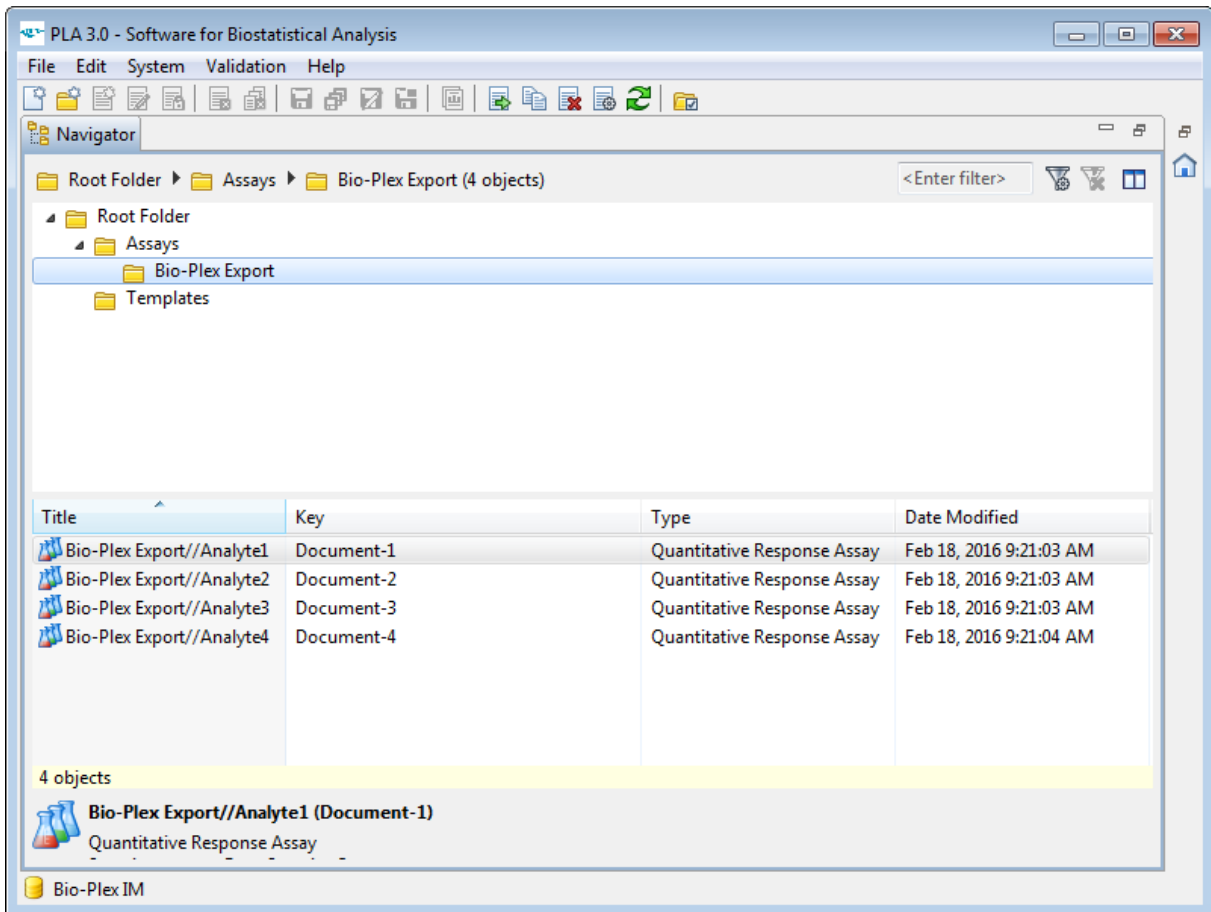
## Import Documents Using The Bio-Plex Import Module

You can view the progress and result of the import using the status dialog.



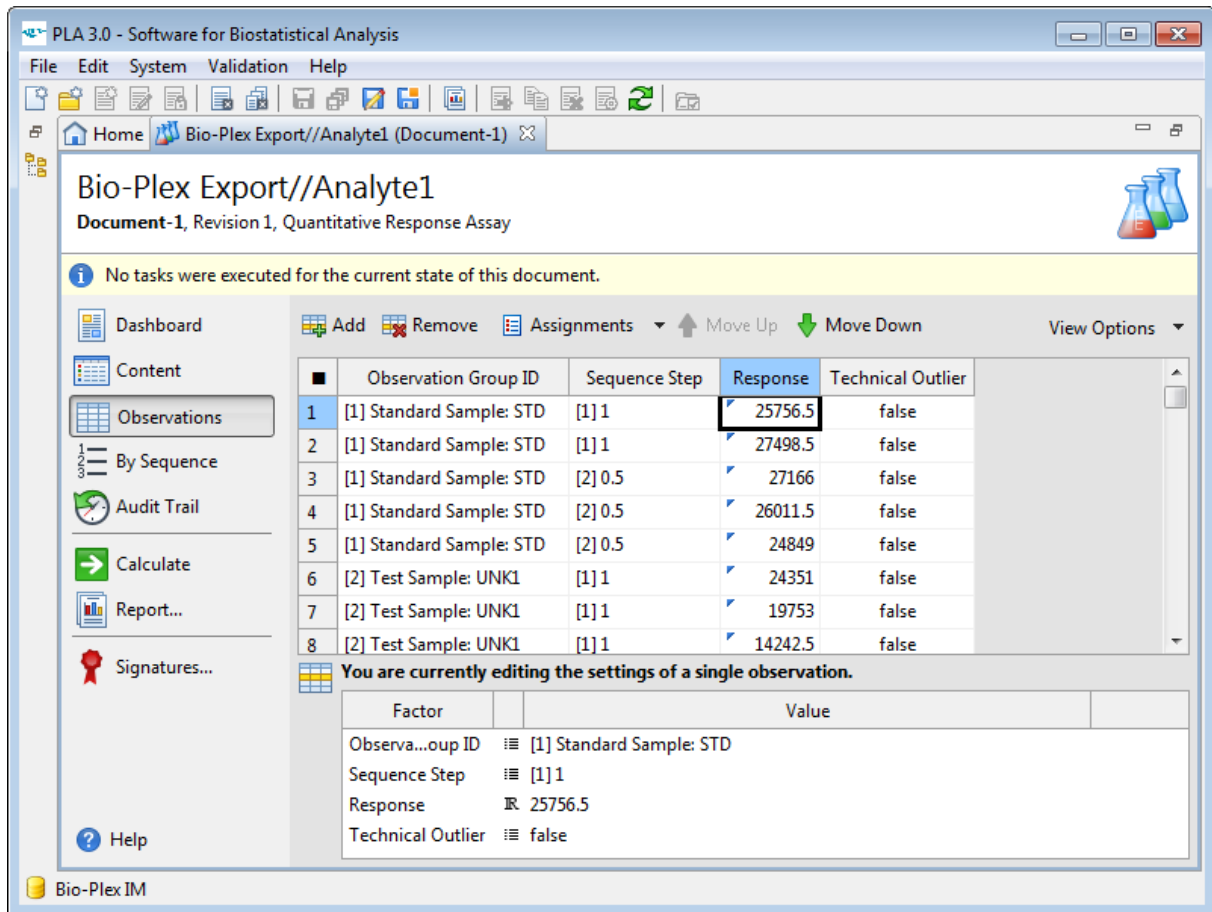
## Bio-Plex Import Module - User Guide

After the process was finished, a folder with the name of the selected file and one Quantitative Response Assay for each analyte has been created.



## Import Documents Using The Bio-Plex Import Module

The dataset of each created document contains the measured values and, if selected, the position information.



PLA 3.0 - Software for Biostatistical Analysis

File Edit System Validation Help

Home Bio-Plex Export//Analyte1 (Document-1)

### Bio-Plex Export//Analyte1

Document-1, Revision 1, Quantitative Response Assay

No tasks were executed for the current state of this document.

Dashboard  
Content  
Observations  
By Sequence  
Audit Trail  
Calculate  
Report...  
Signatures...  
Help

Add Remove Assignments Move Up Move Down View Options

	Observation Group ID	Sequence Step	Response	Technical Outlier
1	[1] Standard Sample: STD	[1] 1	25756.5	false
2	[1] Standard Sample: STD	[1] 1	27498.5	false
3	[1] Standard Sample: STD	[2] 0.5	27166	false
4	[1] Standard Sample: STD	[2] 0.5	26011.5	false
5	[1] Standard Sample: STD	[2] 0.5	24849	false
6	[2] Test Sample: UNK1	[1] 1	24351	false
7	[2] Test Sample: UNK1	[1] 1	19753	false
8	[2] Test Sample: UNK1	[1] 1	14242.5	false

You are currently editing the settings of a single observation.

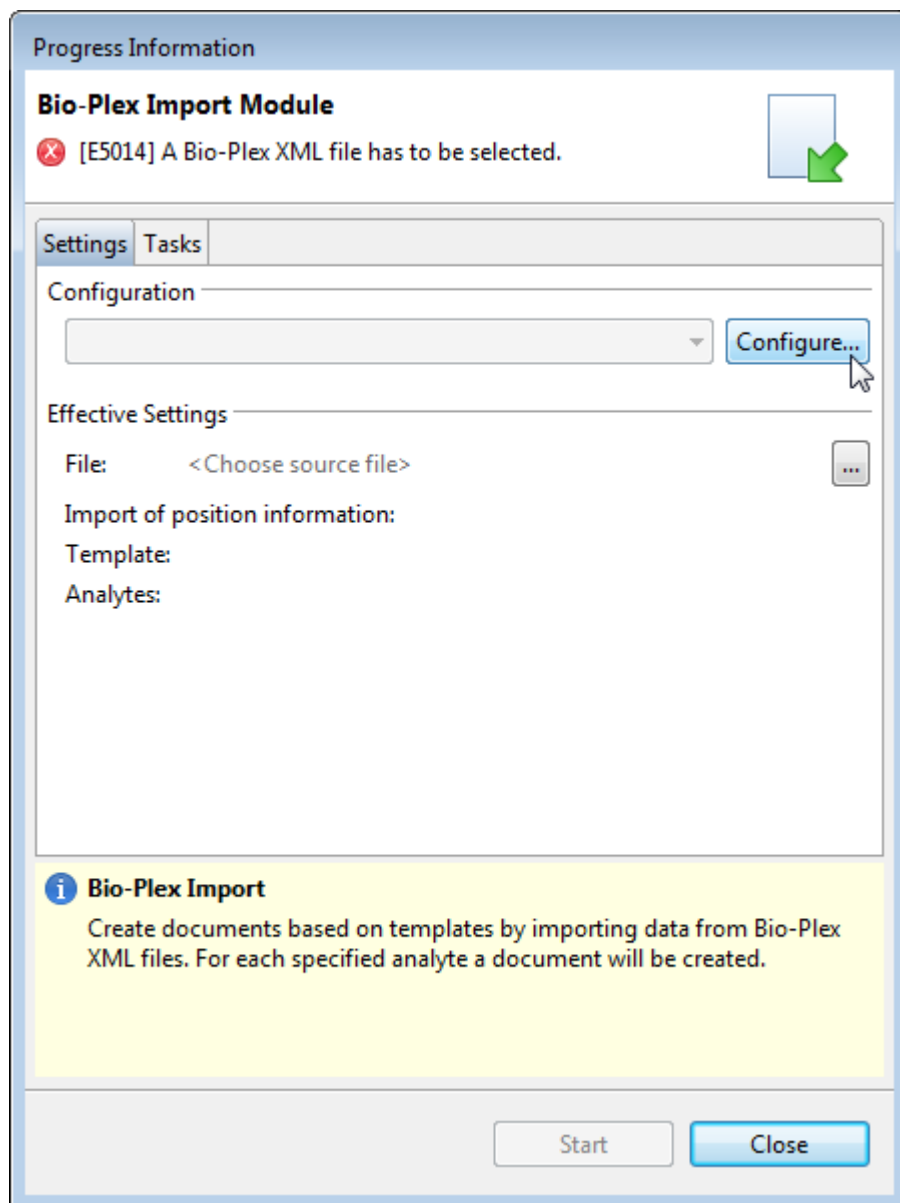
Factor	Value
Observation ID	[1] Standard Sample: STD
Sequence Step	[1] 1
Response	25756.5
Technical Outlier	false

Bio-Plex IM

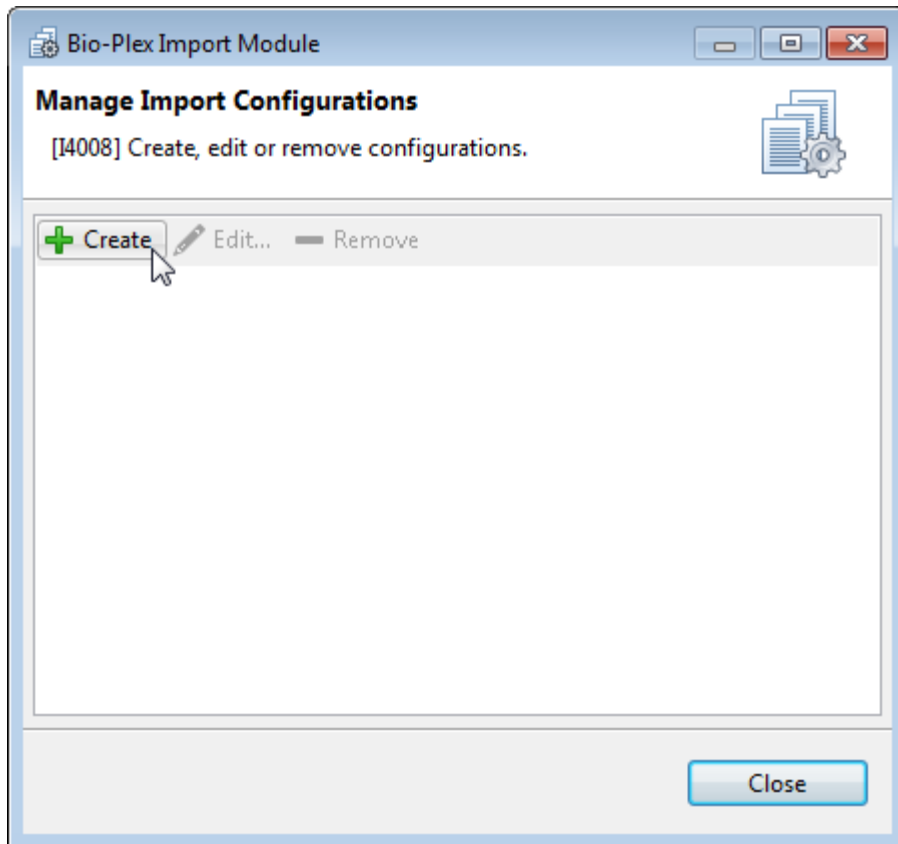
## MANAGE CONFIGURATIONS

Within PLA, the Bio-Plex Import Module allows you to create, edit, or delete import configurations.

You can open the profile configuration dialog by clicking **Configure...** in the Bio-Plex Import dialog.

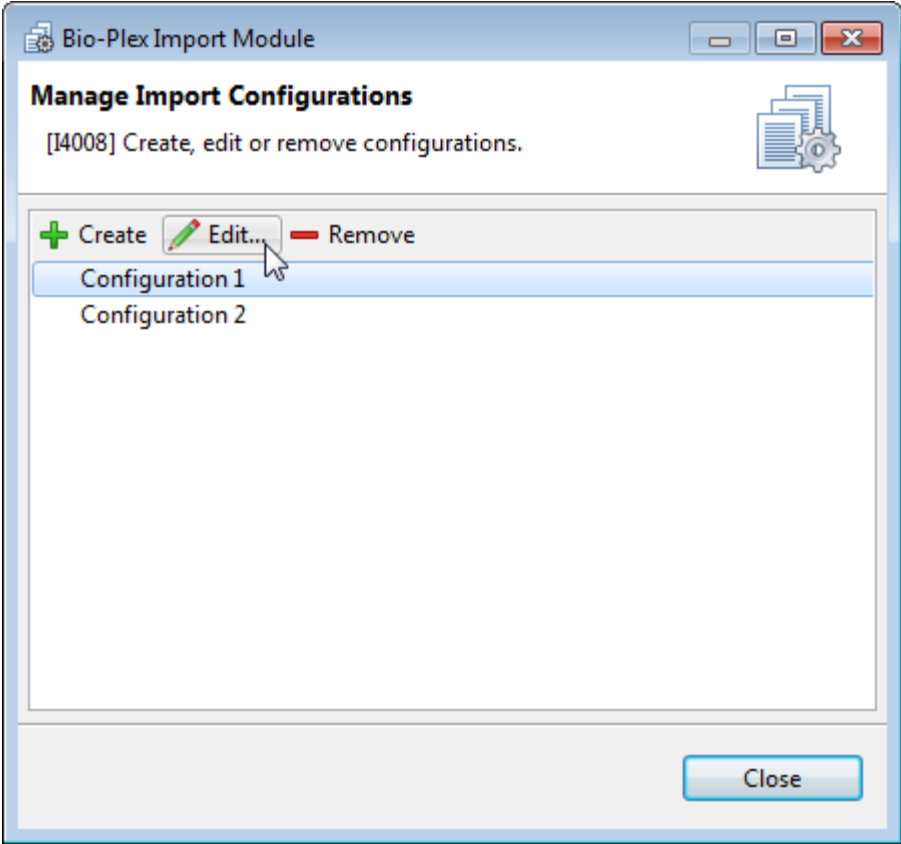


To configure the Bio-Plex Import Module, you have to create an import configuration in the Manage Import Configurations dialog.



Bio-Plex Import Module - User Guide

The Manage Import Configurations dialog also allows editing or removing existing import configurations.

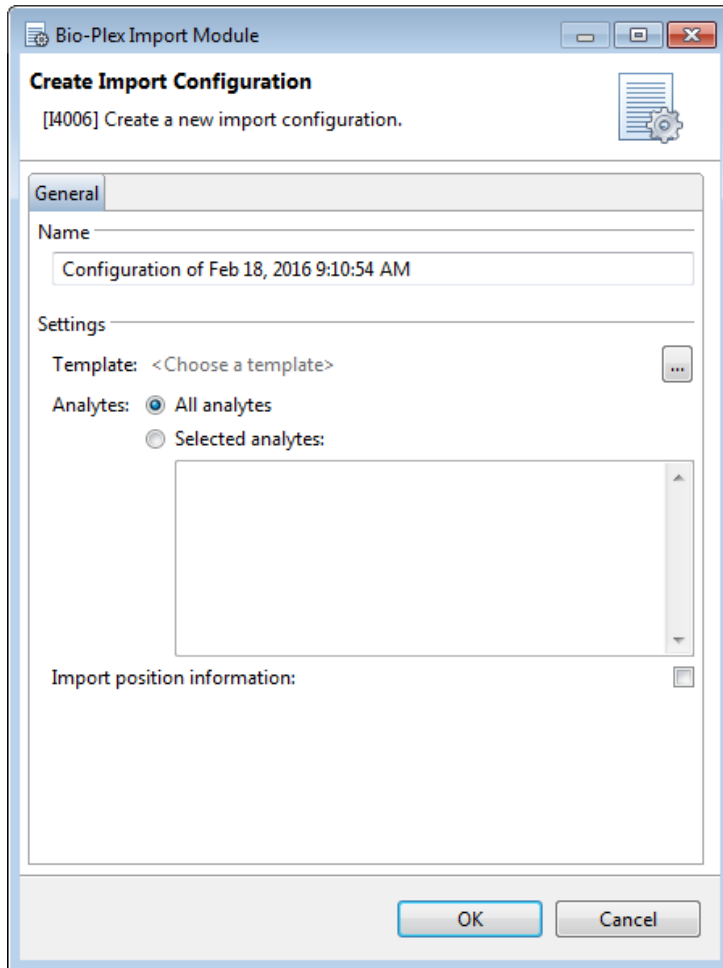


## STANDARD CONFIGURATION OPTIONS

Within PLA, the Manage Import Configurations dialog offers the possibility of creating, editing, or deleting import configurations. When creating or editing an import configuration, the following options are available:

### GENERAL

You can alter the name of the import configuration and change its settings.



### NAME

Allows you to enter the name of the configuration profile.

SETTINGS

The settings section contains specific settings for the import process using the Bio-Plex Import Module.

<b>Label</b>	<b>Description</b>
Template	Allows you to select a Quantitative Response Assay template. The template will be used to create the documents.
Analytes: All Analytes	If this option is selected, the Bio-Plex Import Module will create a document for each analyte in the source file. Select this option if you are not sure of the names of the analytes in the source file or if you want to import the data of all analytes.
Analytes: Selected Analytes	If this option is selected, the Bio-Plex Import Module will create a document for each listed analyte. Write the name of the analytes as they are used in the source file line by line.
Import position information	If this option is selected the position information of each well will be imported to the dataset along with the response values.



## ADVANCED CONFIGURATION OPTIONS

The advanced configuration of the Bio-Plex Import Module is handled via the `Bio-Plex Import Package.properties` configuration that is stored in the `C:\ProgramData\Stegmann Systems\PLA 3.0` directory. Any settings that are made using the Bio-Plex Import Module configurations are also saved to the `Bio-Plex Import Package.properties` file.

**Important:** The encoding of the `.properties` file is ISO-8859-1 (Latin-1). All non-Latin-1 characters must be entered by using `\` as an escape character. Example: The special character `:` must be entered as `\:` and the special character `\` must be entered as `\\`

To configure the Bio-Plex Import Module, you need write permissions on the `Bio-Plex Import Package.properties` file. Regular Microsoft Windows user accounts do not have write permissions within the Program Data directory, so you might need an administrative account to change the configuration.

## DEFINE AVAILABLE CONFIGURATION PROFILES

You can define the available configuration profiles per folder on a database. To define the available configuration profiles, add the following property to your `Bio-Plex Import Package.properties` file:

```
com.stegmannsystems.edp.imports.bioplex.restrictions.<DB-UUID>.profile.<Folder-Key>
```

You can view the DB-UUID of the database using the PLA Database Policies (General tab). The folder key can be viewed using the PLA folder properties dialog (Document Key value).

The following example will limit the available configuration profiles for the folder with the folder-key "Folder-1" (Root Folder) and all of its subfolders unless a subfolder defines its own set of available configuration profiles. Multiple configuration files have to be separated by a pipe symbol (`|`). Only the configuration profiles named "Profile1" and "Profile2" can be used in the Bio-Plex Import Module:

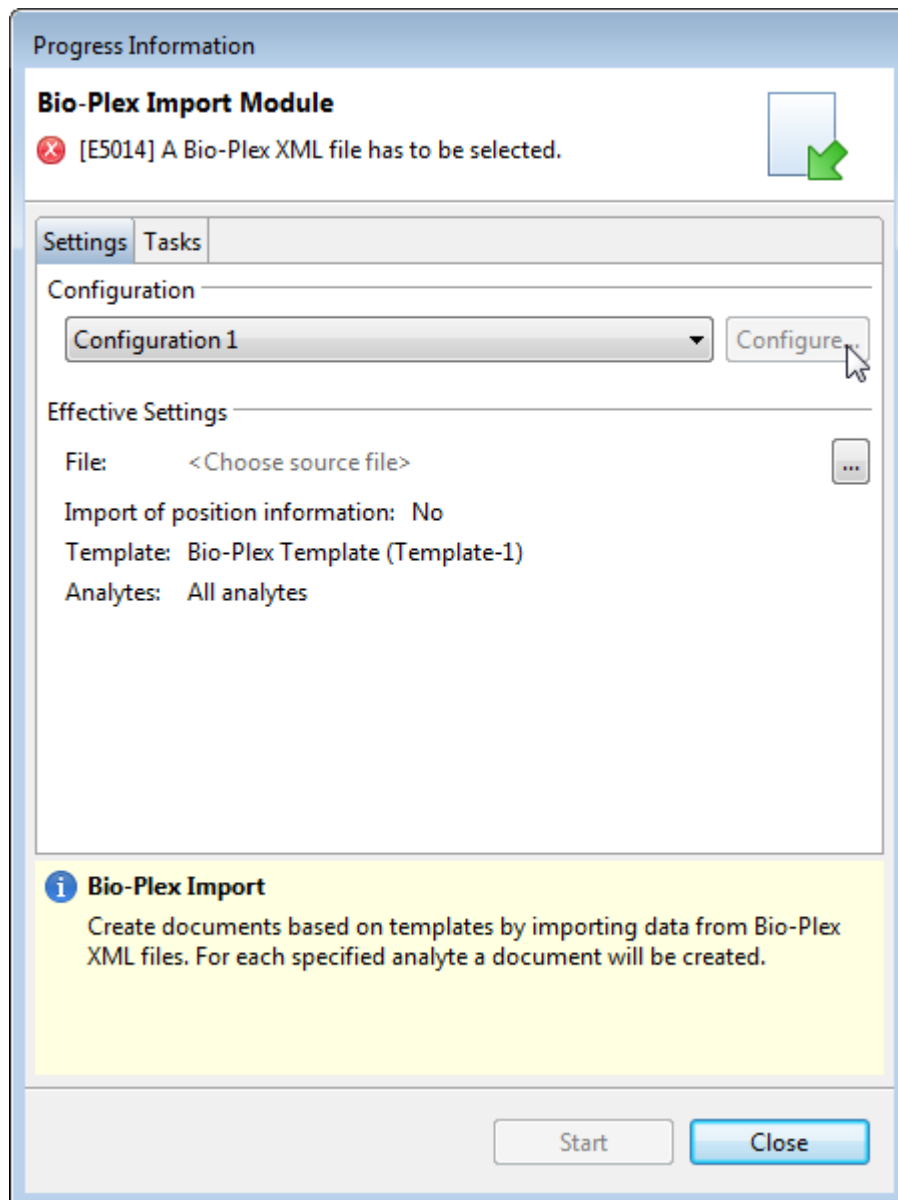
```
com.stegmannsystems.edp.imports.bioplex.restrictions.6c868b23-d386-45f8-833b-15e8014b424f.profile.Folder-1=Profile1|Profile2
```

This setting does not prevent users from changing the available profiles. See chapter Prevent Configuration of Configuration Profiles for further information.

### PREVENT CONFIGURATION OF CONFIGURATION PROFILES

By default, all users that can access the Bio-Plex Import Module can create, edit, and delete import configurations. To prevent users from creating, editing, and deleting import configurations, you have to add the following property to your `Bio-Plex Import Package.properties` file:

```
com.stegmannsystems.edp.imports.bioplex.restrictions.canEditProfiles=false
```

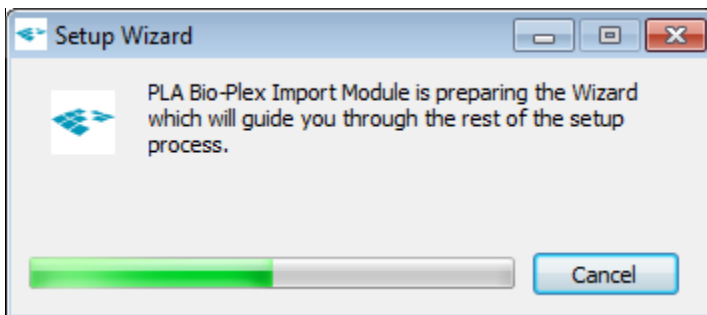


## INSTALLATION

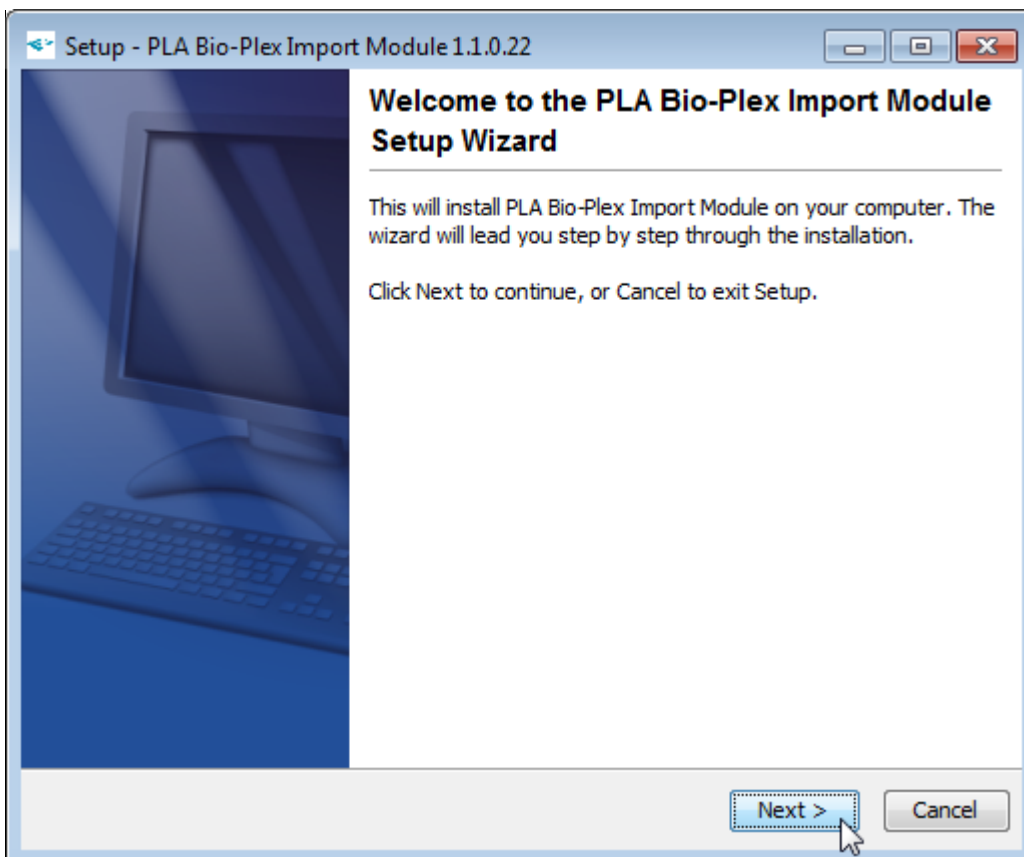
Installing the Bio-Plex Import Module consist of two parts. The Setup part will install the Import Module on your local hard disk. Afterward, it can be installed on multiple databases using the PLA Package Management.

## SETUP

To install the Import Module, start the installation program using a Microsoft Windows Administrator account.

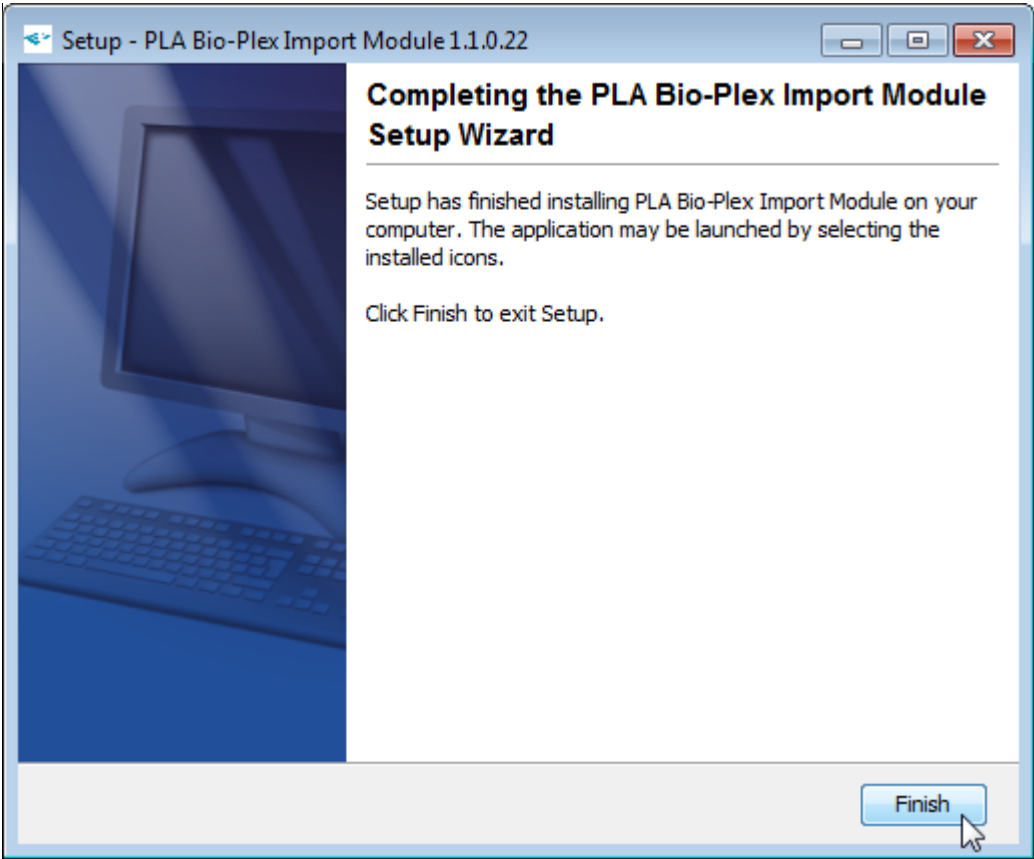


Follow the on-screen instructions.



Bio-Plex Import Module - User Guide

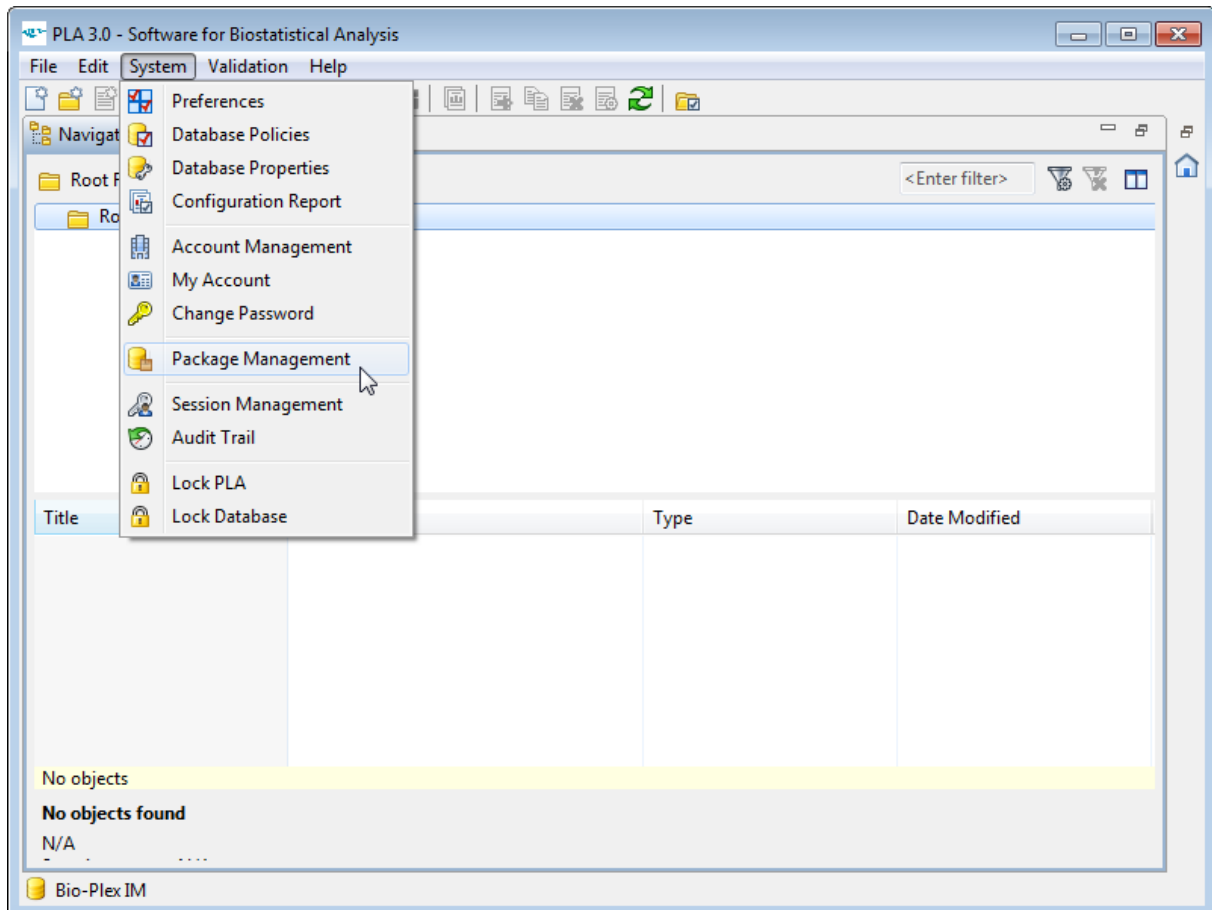
When the installation finished successfully, click **Finish** to close the installation program.



## PACKAGE MANAGEMENT

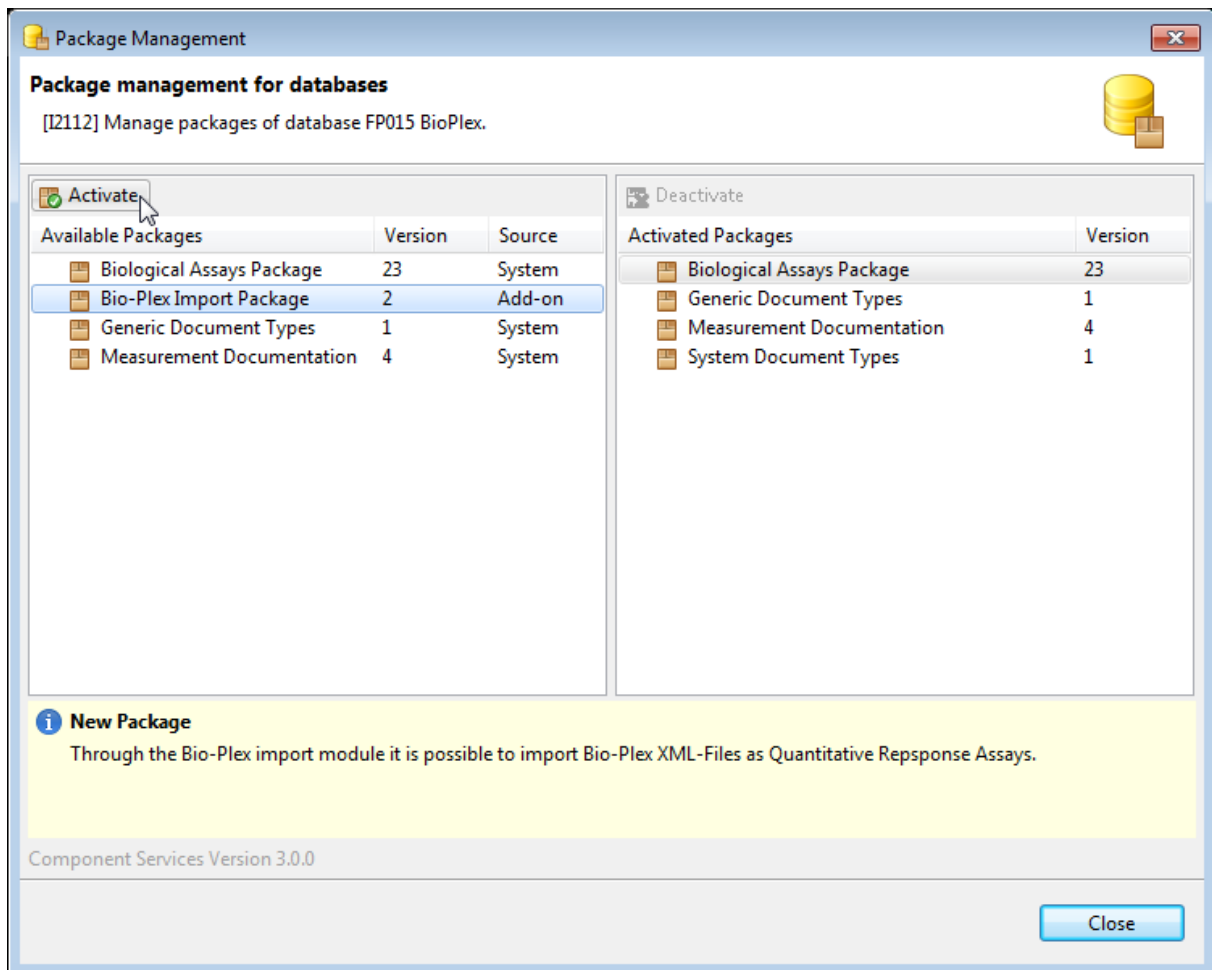
To use the Bio-Plex Import Module, it has to be activated in the specific database.

To make the module available in a PLA database, a PLA user account with permission to view and manage packages is required. Log in to PLA using a user account with the required permissions and open the **Package Management** from the **System** menu.



## Bio-Plex Import Module - User Guide

Select the Bio-Plex Data Acquisition Module out of the list of available packages, and click **Activate**.



PLA will activate the Import Module in the database. When the activation is complete, the package will be listed as an activated package. The Import Module can now be used to import documents into the database using the **Import** action in the **File** menu.

