
TEXT

DATA ACQUISITION MODULE

Version 1.2.0

User Guide

COPYRIGHT

© 2006-2016 Stegmann Systems GmbH, Rodgau, Germany. All rights reserved.

The Stegmann Systems products referred to in this document are also copyrighted, and all rights are reserved by Stegmann Systems and/or its licensors, if any. This manual may not, in whole or in part, be copied, translated, or reduced to any electronic medium or machine-readable form without prior consent, in writing, from Stegmann Systems.

The information in this manual is subject to change without notice, and Stegmann Systems assumes no responsibility for any errors that may appear in this document. The references in this manual to specific platforms supported are subject to change.

Java and all Java-based marks are trademarks or registered trademarks of Oracle, Inc. in the U.S. and other countries.

Any other trademarks or service marks contained herein are the property of their respective owners. PLA 3.0 includes software developed by the Apache Software Foundation, <http://www.apache.org/>, Copyright 1999-2016 The Apache Software Foundation. All rights reserved.

PLA 3.0 uses libraries that are subject to the Lesser GNU Public License (LGPL) Version 2.1 (the "License"); you may not use these files except in compliance with the License. A copy of the License is distributed in the same folder as the respective file. Software distributed under the License is distributed on an "AS IS" basis, WITHOUT WARRANTY OF ANY KIND, either express or implied. See the License for the specific language governing rights and limitations under the License. All rights reserved.

CONTACT

Stegmann Systems GmbH
Raiffeisenstr. 2 // C1, C2
63110 Rodgau
Germany

Phone: +49 6106 770100

Fax: +49 6106 7701029

www.bioassay.de

support@bioassay.de

TABLE OF CONTENTS

Welcome	4
Overview.....	5
System Requirements	5
Acquire Data using the Text Data Acquisition Module	6
Managing Configurations	13
Standard Configuration Options	15
General	15
Name	15
Import Strategy	16
Source File.....	17
File	17
File Structure	18
Datasets.....	19
Dataset location	19
Dataset.....	20
Columns.....	20
Rows	21
Values	21
Regional Settings.....	22
Invalid Value Handling.....	22
Visualization of File Structure and Dataset	23
Advanced Configuration Options.....	24
Define Available Configuration Profiles.....	24
Prevent Configuration of Configuration Profiles	25
Installation.....	26
Setup	26
Package Management.....	28

WELCOME

Welcome to the Text Data Acquisition Module User Guide. This guide is intended for users, functional administrators of PLA, and system administrators.

It describes all aspects of the installation, configuration, and usage of the Text Data Acquisition Module. It also covers some text file format options that affect the behavior of the Text Data Acquisition Module.

HOW TO USE THIS GUIDE

The structure of this guide is as follows:

System Requirements (System Administrators and PLA Administrators)

- Requirements of the Data Acquisition Module

Step by Step Guide: Acquire Data with Text Data Acquisition Module (PLA Users)

- Acquire data
- Manage configurations

Installation (System Administrators)

- Installation of the Data Acquisition Module

OVERVIEW

The Text Data Acquisition Module gives you the opportunity to acquire data from text files using PLA 3.0.4.

A single import format is available for the Text Data Acquisition Module:

Text – Allows importing data from a text file.

In addition, further configuration options are available in the Text Data Acquisition Module:

- **Numberformat:** Country-specific number format.
- **Encoding:** Encoding of the text file.

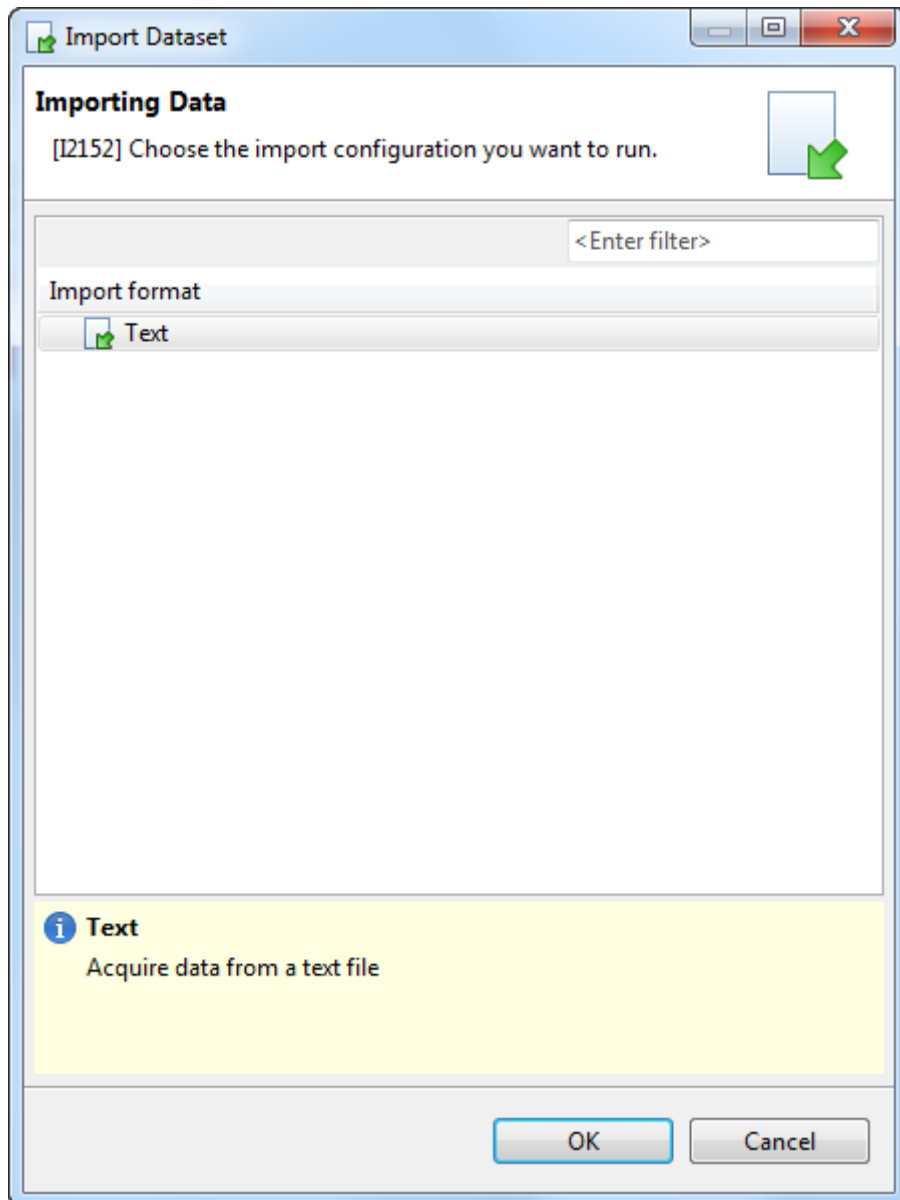
SYSTEM REQUIREMENTS

The Text Data Acquisition Module v1.2.0 requires PLA 3.0.4.

ACQUIRE DATA USING THE TEXT DATA ACQUISITION MODULE

The Text Data Acquisition Module allows you to import data from existing text files into PLA Quantitative Response Assay documents. To start the Text Data Acquisition Module, run the **Acquire Data** action of a PLA Quantitative Response Assay document.

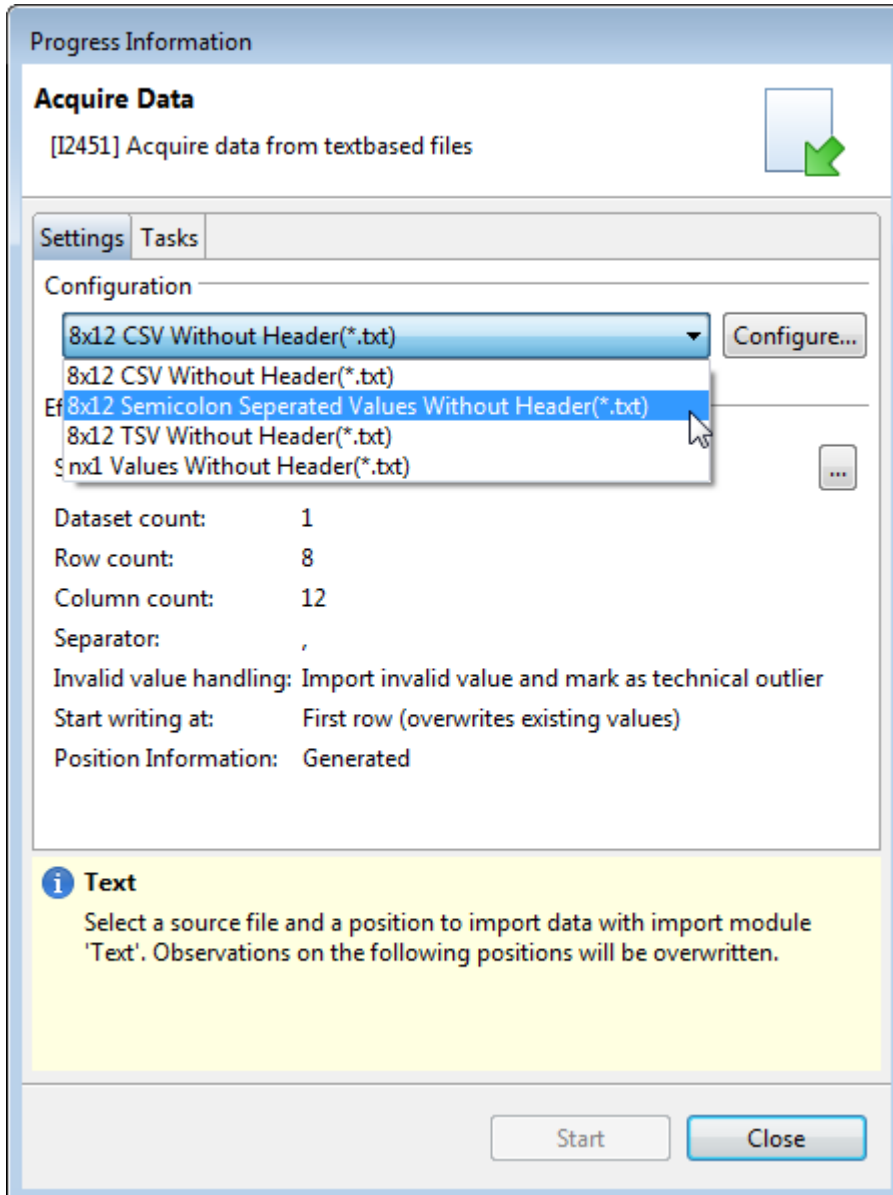
Select the Text Data Acquisition import format and click **OK**.



Acquire Data using the Text Data Acquisition Module

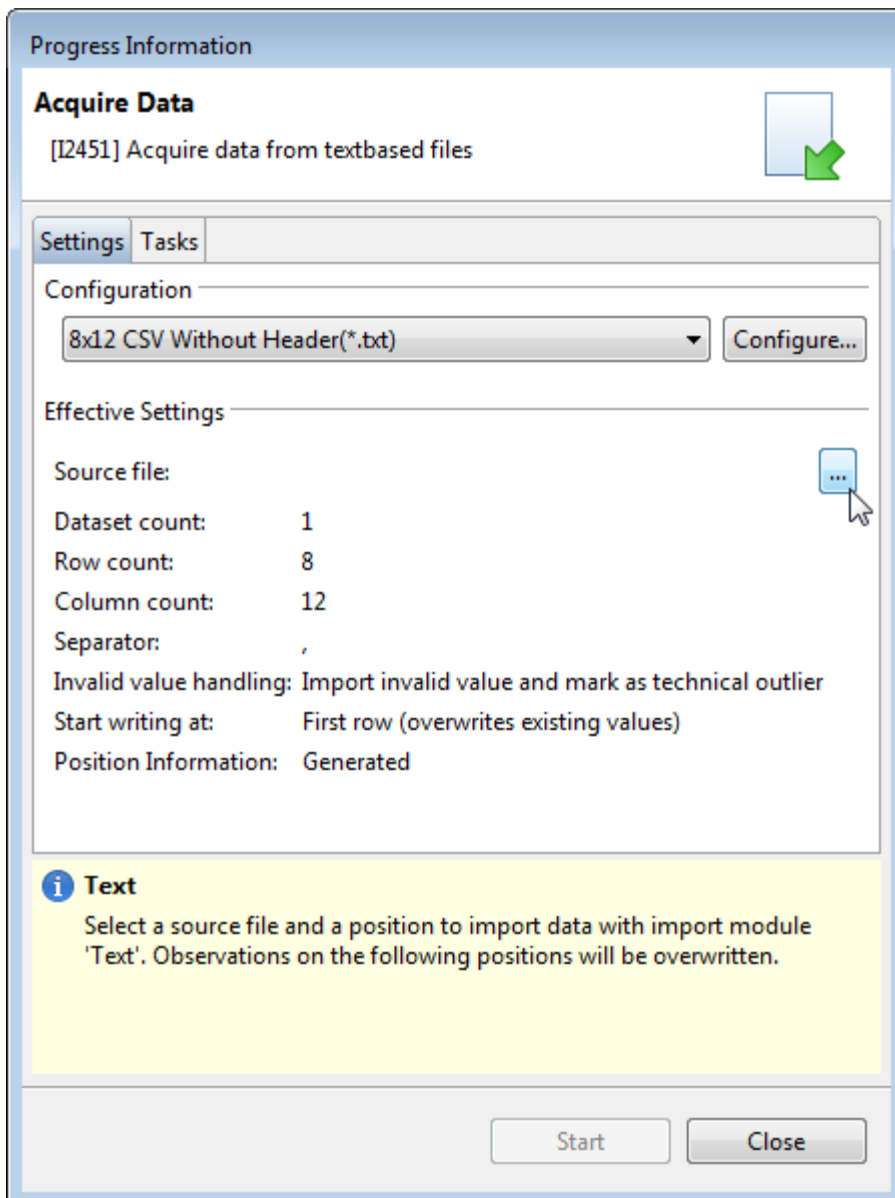
You can select a configuration profile using the drop-down menu of the PLA Text Data Acquisition dialog.

If there is no configuration profile listed, it is necessary to create one (see chapter Manage Configurations).



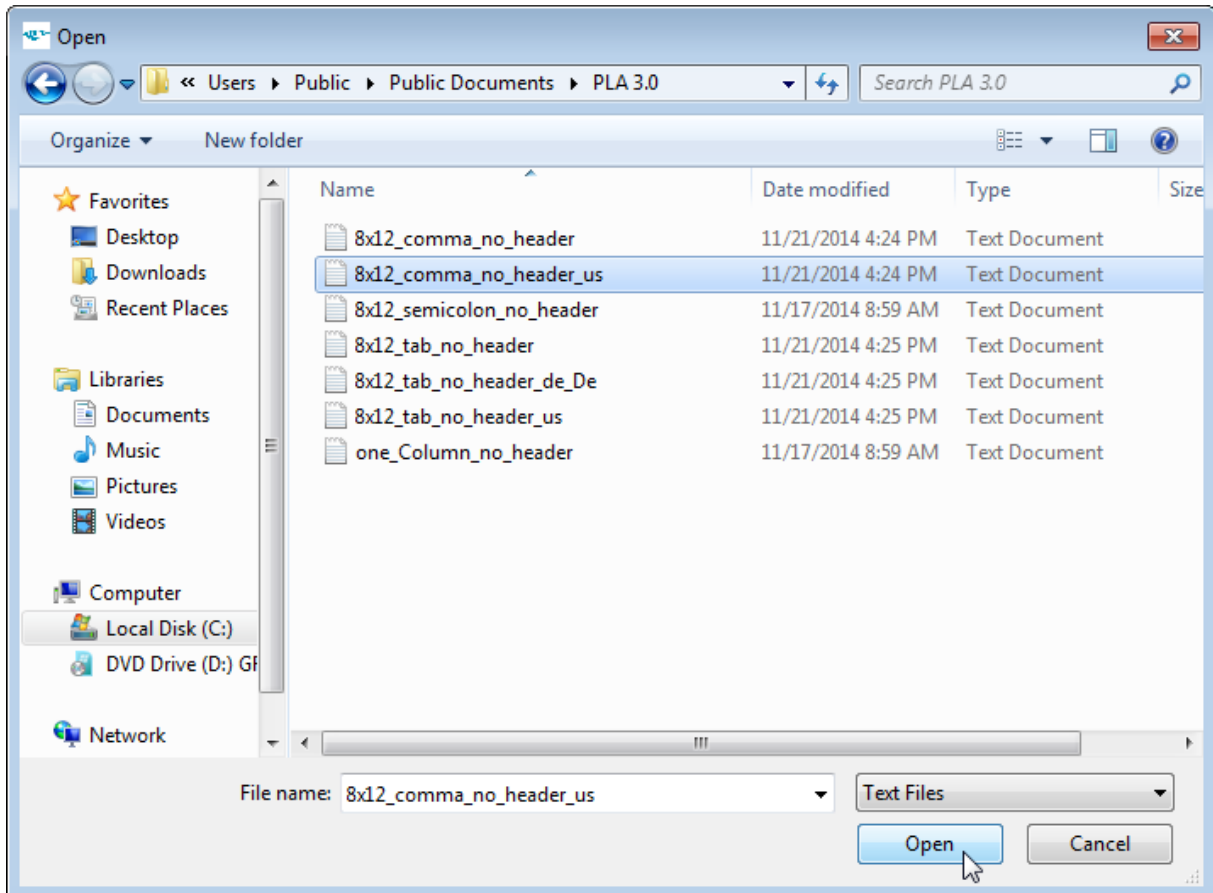
Text Data Acquisition Module - User Guide

After choosing a configuration profile, select a source file using the ... button.

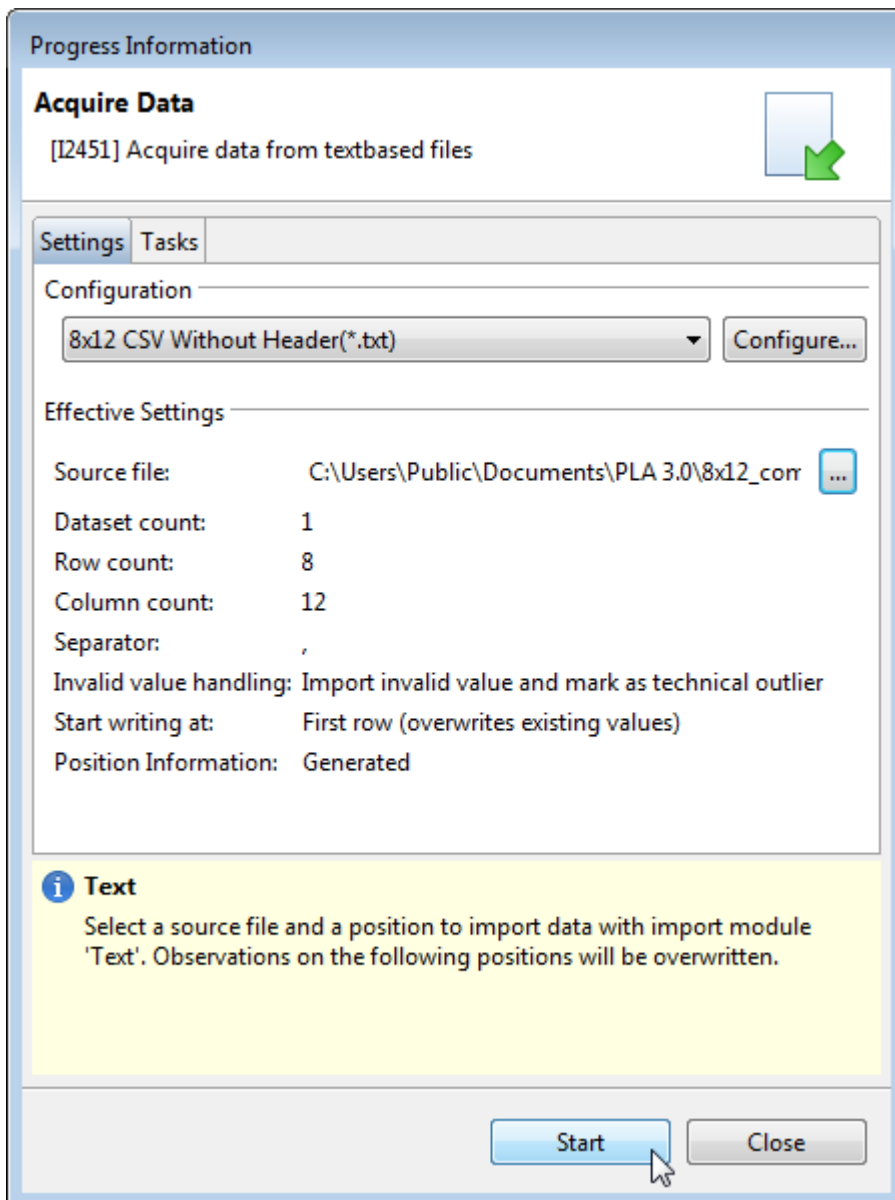


Acquire Data using the Text Data Acquisition Module

The available source files are restricted by name patterns specified in the configuration profile.

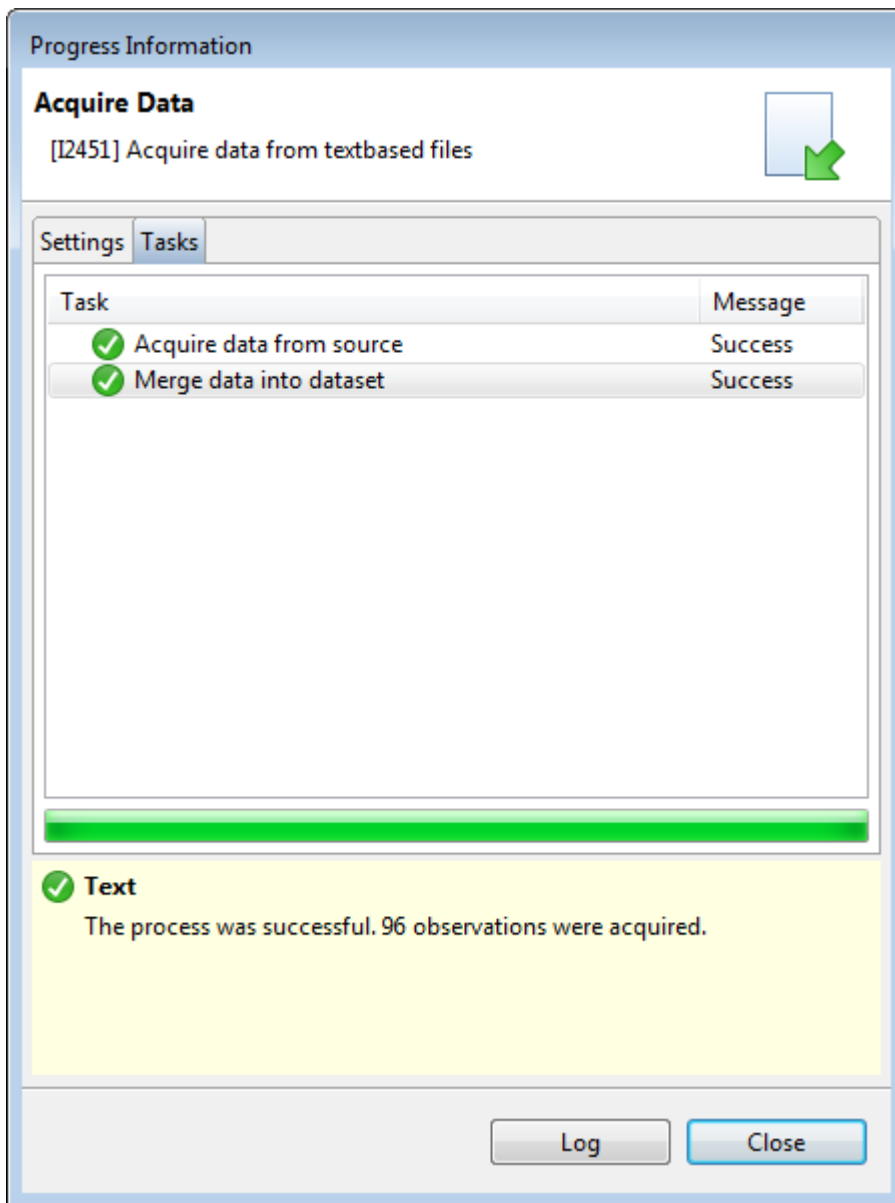


After choosing a source file, the data acquisition can be started by clicking the **Start** button.



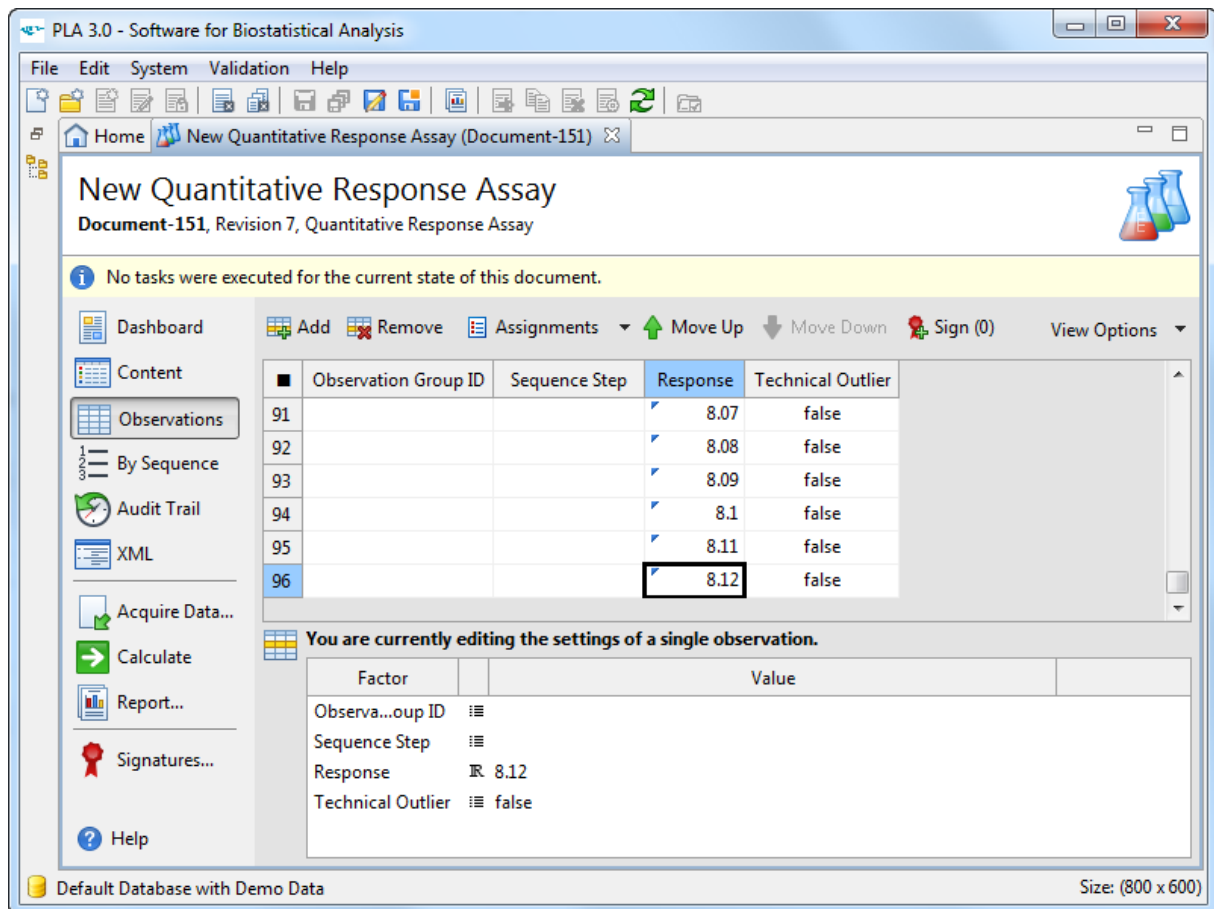
Acquire Data using the Text Data Acquisition Module

You can follow the progress of the data acquisition and the result of the data acquisition using the status dialog.



Text Data Acquisition Module - User Guide

The result of the data acquisition is available in the response column in the observations view of the PLA document editor.



The screenshot displays the PLA 3.0 software interface for a 'New Quantitative Response Assay'. The main window shows a table of observations with the following data:

Observation Group ID	Sequence Step	Response	Technical Outlier
91		8.07	false
92		8.08	false
93		8.09	false
94		8.1	false
95		8.11	false
96		8.12	false

The 'Response' column for observation 96 is highlighted with a blue border, indicating it is the current observation being edited. Below the table, a panel titled 'You are currently editing the settings of a single observation.' shows the following factors and values:

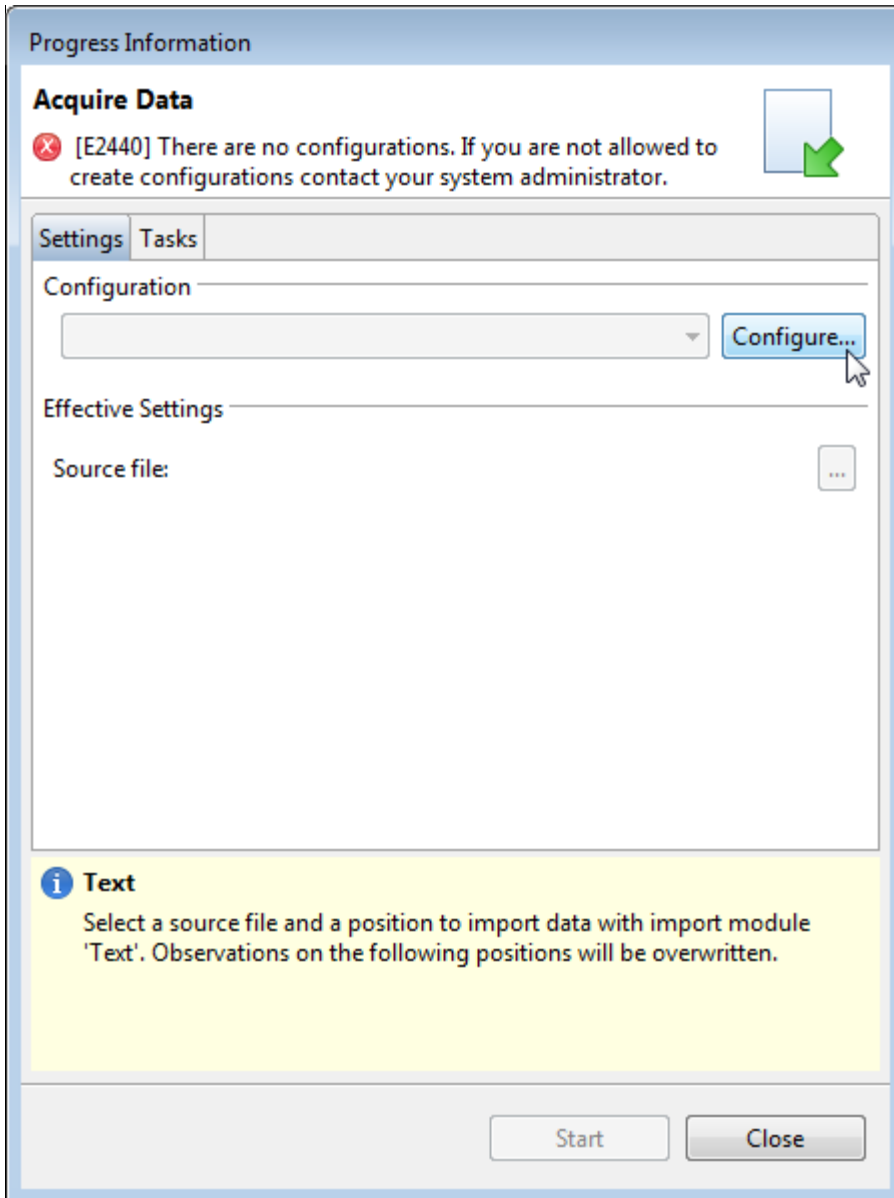
Factor	Value
Observa...oup ID	
Sequence Step	
Response	8.12
Technical Outlier	false

The software interface includes a menu bar (File, Edit, System, Validation, Help), a toolbar, and a sidebar with navigation options like Dashboard, Content, Observations, By Sequence, Audit Trail, XML, Acquire Data..., Calculate, Report..., Signatures..., and Help. The status bar at the bottom indicates 'Default Database with Demo Data' and 'Size: (800 x 600)'.

MANAGING CONFIGURATIONS

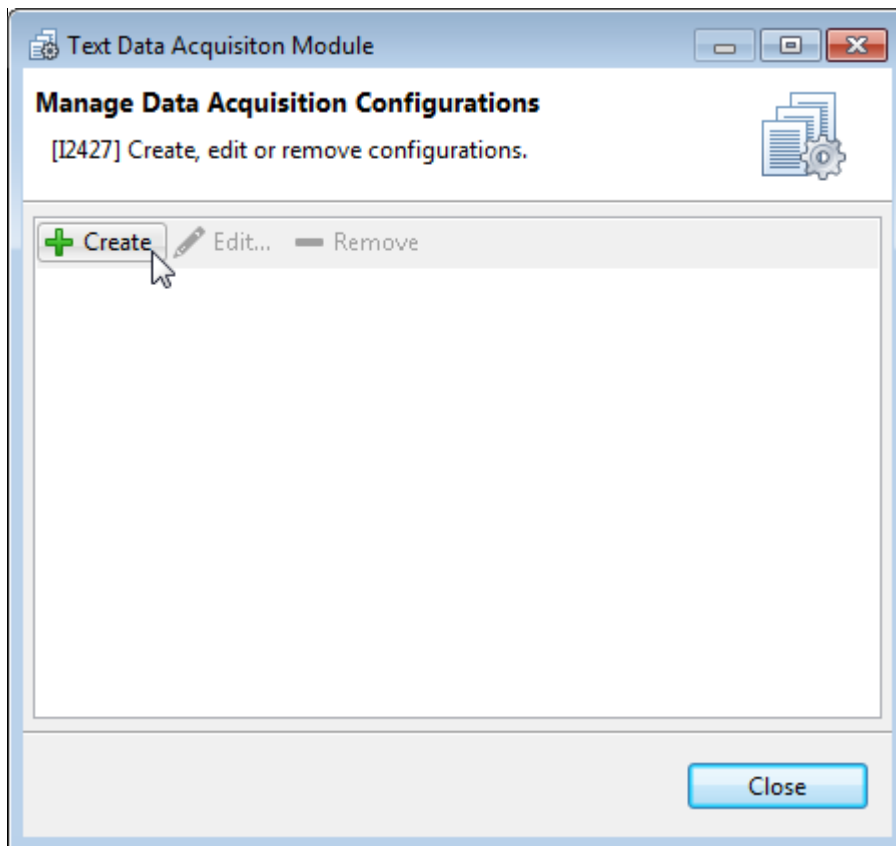
Inside of PLA ,the Text Data Acquisition Module offers the possibility of creating, editing, or deleting import configurations.

You can open the profile configuration dialog by the **Configure...** button in the Acquire Data dialog.



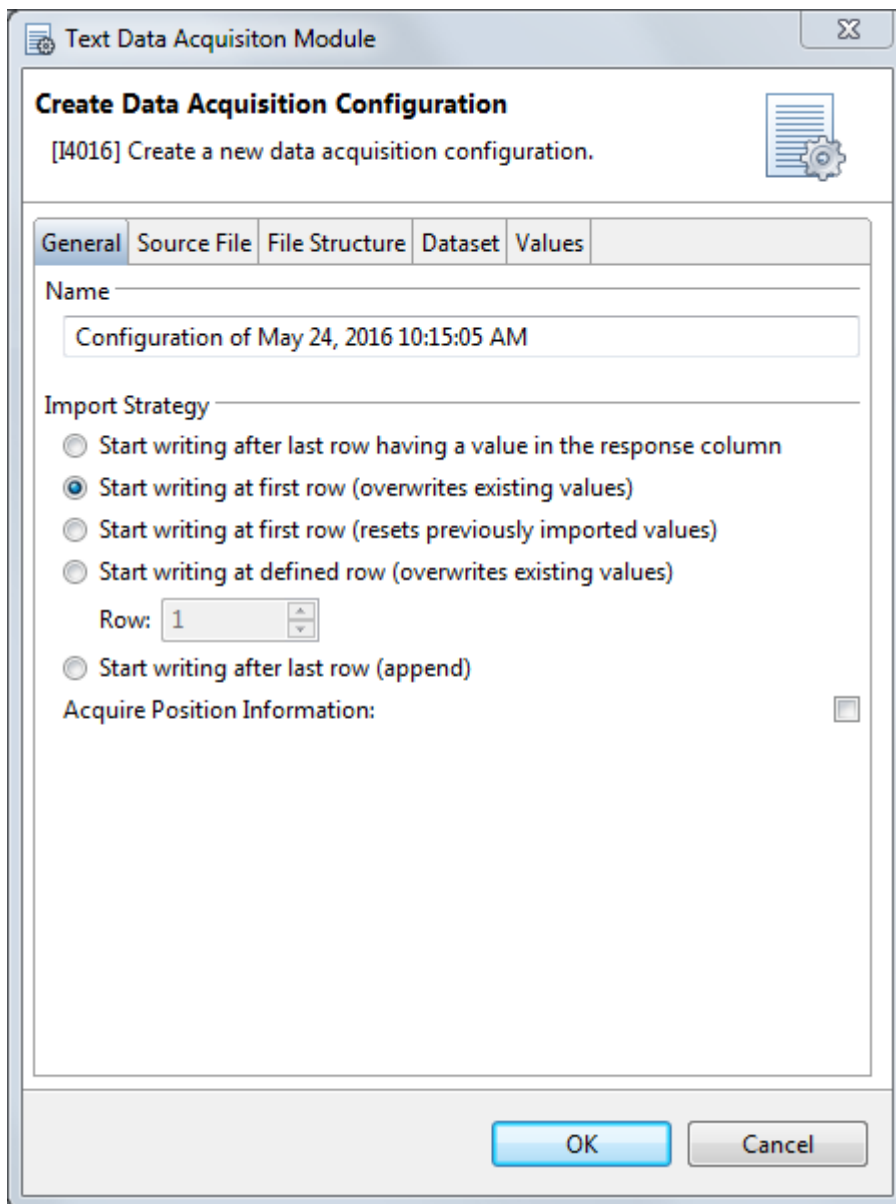
Text Data Acquisition Module - User Guide

To configure the Text Data Acquisition Module, you need to create a configuration profile in the Manage Data Acquisition Configurations dialog.



STANDARD CONFIGURATION OPTIONS

GENERAL



NAME

The name of the configuration.

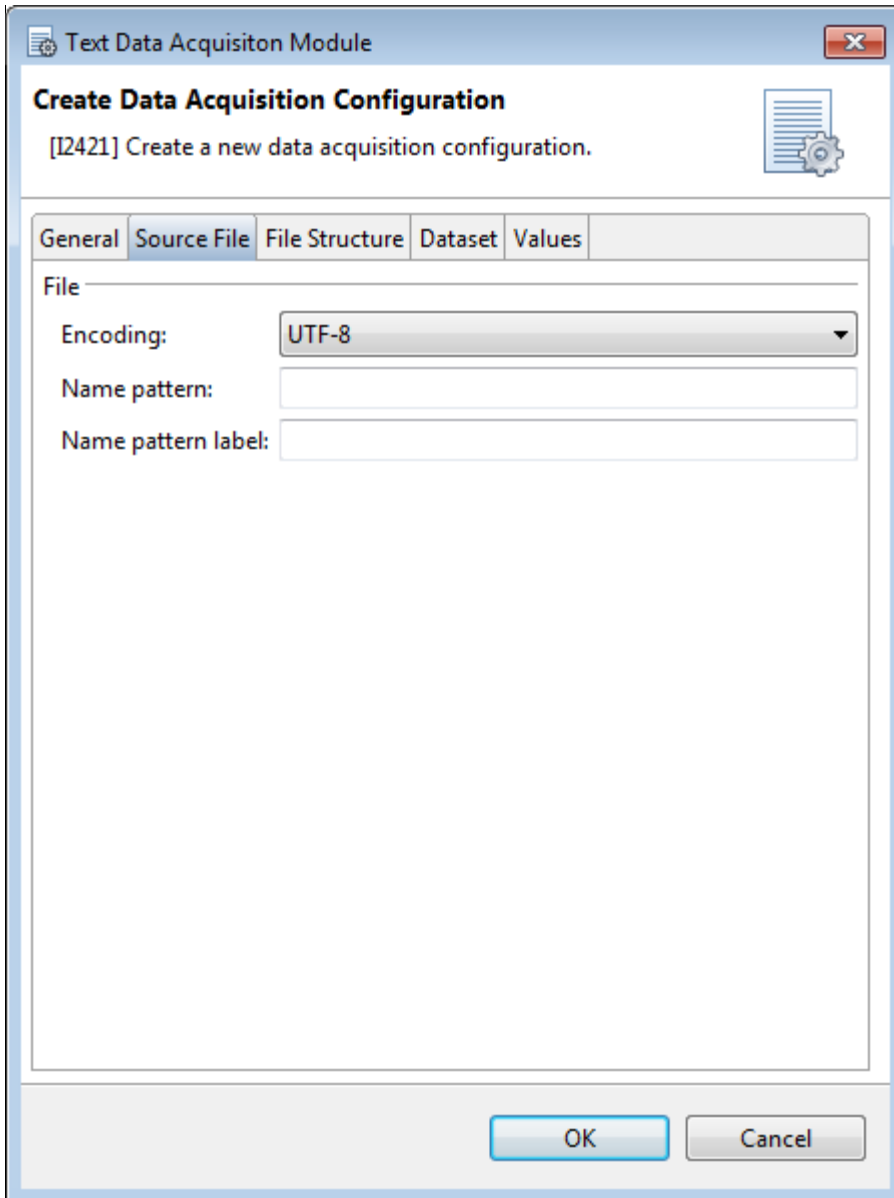
Text Data Acquisition Module - User Guide

IMPORT STRATEGY

Describes the integration of the acquired data in PLA 3.

Label	Description
Start writing after last row having a value in the response column	Starts writing after the last row having a value in the response column.
Start writing at first row (overwrites existing values)	Starts writing at first observation row, overwriting existing values
Start writing at first row (resets previously imported values)	Starts writing at first observation row, resetting previously imported values.
Start writing at defined row (overwrites existing values)	Starts writing in specified observation row, overwriting existing values
Start writing after last row (append)	Starts writing after last observation row, keeping existing values
Generate Position Information	Generates row, column, and plate factor values if available

SOURCE FILE

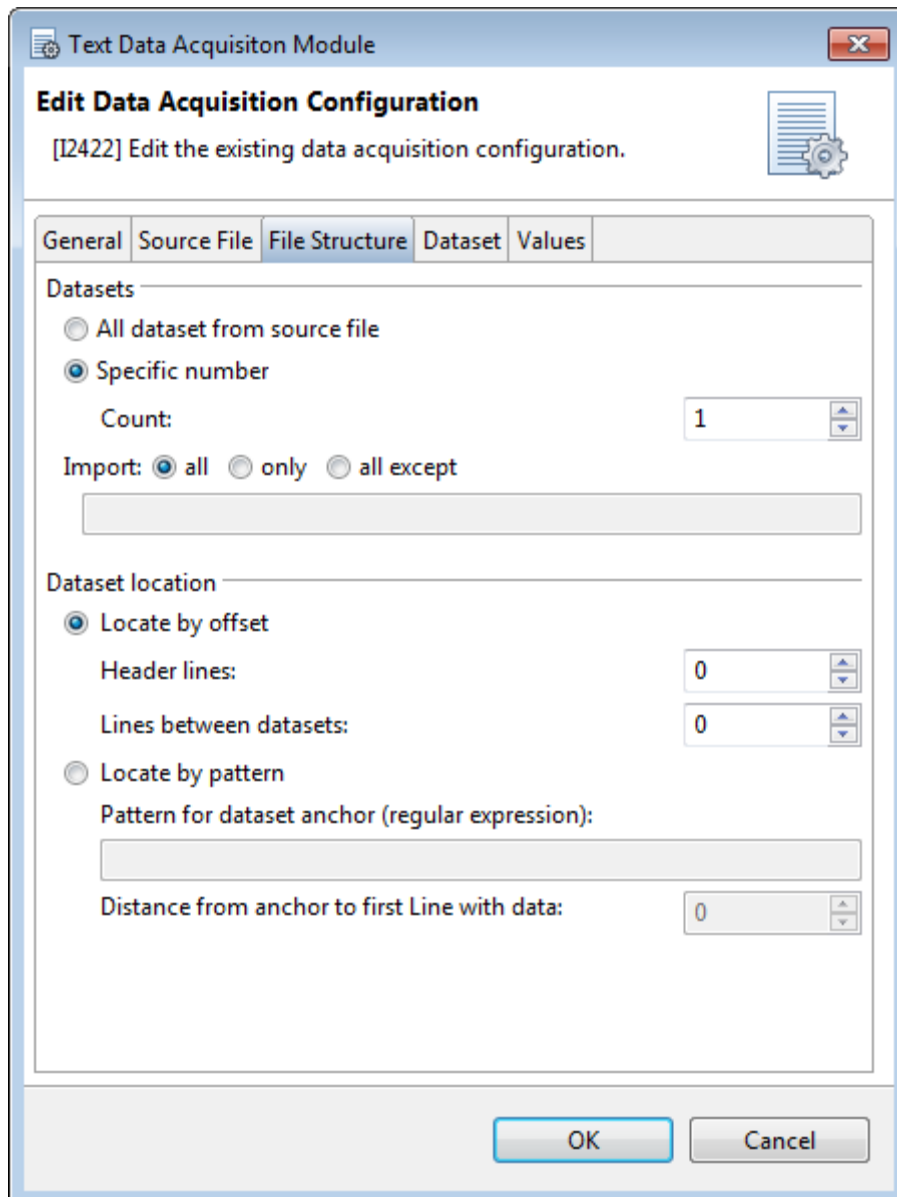


FILE

Defines the encoding, name and extension of files that can be imported using the configuration.

Label	Description
Encoding	Allows selecting the encoding of the text file
Name pattern	The file name filtering the possibilities of choosing the source file
Name pattern label	The filter label in the Windows source file selection dialog

FILE STRUCTURE



DATASETS

Describes the dataset(s) of files that can be imported using the configuration.

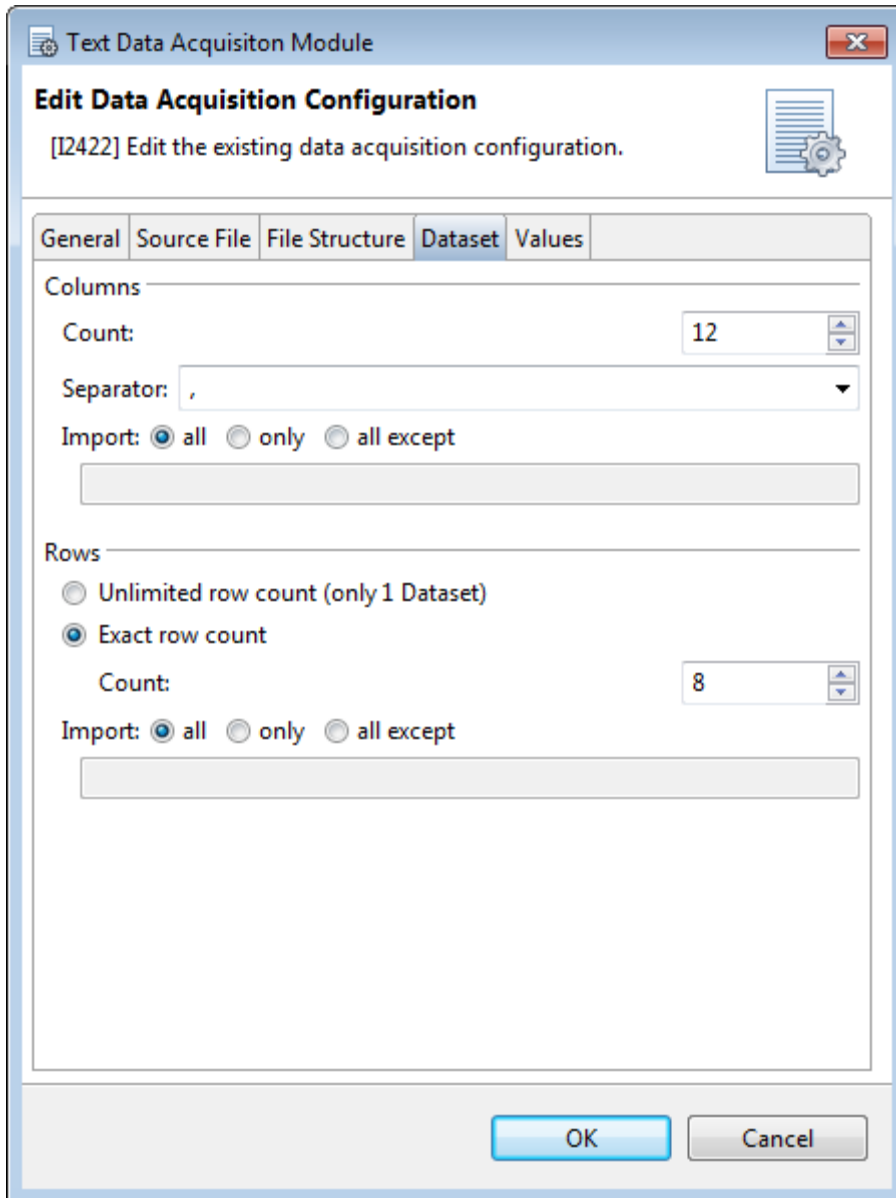
Label	Description
All datasets from source file	All datasets in the text file will be considered during the data acquisition process.
Count	The number of datasets in the text file that will be considered during the data acquisition process. Starting with the first dataset that is found in the text file.
Import	Allows choosing between all, only specific datasets, or all except specific datasets of the text file

DATASET LOCATION

Describes the location of the dataset(s) of files that can be imported using the configuration.

Label	Description
Locate by offset	Allows setting the number of header lines and the lines between datasets
Locate by pattern	Allows setting the pattern for the dataset anchor as regular expression and the lines between dataset anchor and dataset

DATASET



COLUMNS

Describes the columns of a dataset that can be imported using the configuration.

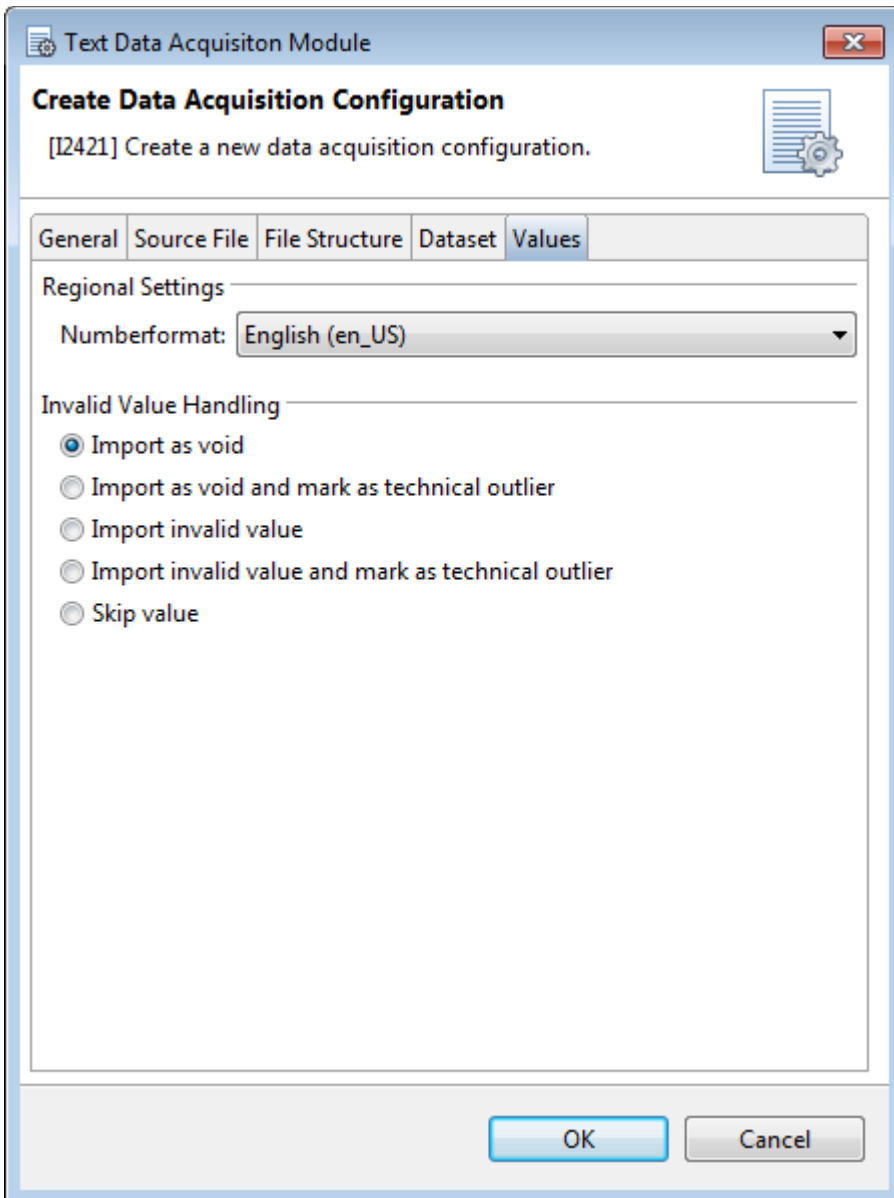
Label	Description
Count	The number of columns
Separator	The separating character between columns
Import	Allows to choose between all, only specific columns, and all except specific columns

ROWS

Describes the rows of a dataset that can be imported using the configuration.

Label	Description
Unlimited row count (only 1 Dataset)	Till end of file, only available if File Structure/Dataset/Count is set to 1
Exact row count	Allows setting the number of rows and choosing between importing all, only specific rows and all except specific rows

VALUES



Text Data Acquisition Module - User Guide

REGIONAL SETTINGS

Describes the values within files, that can be imported using the configuration.

Label	Description
Numberformat	The country specific number format
Fallback value for empty Cells	The value used for empty Cells

INVALID VALUE HANDLING

You can define how invalid values are imported using the invalid value handling settings.

Label	Description
Import as void	Invalid values will be imported as empty values.
Import as void and mark as technical outlier	Invalid values will be imported as empty values and marked as technical outlier.
Import unchanged value and mark as technical outlier	Invalid values will be imported without any changes, but marked as technical outlier. Floating point handling settings apply.
Import unchanged value	Invalid values will be imported without any changes. Floating point handling settings apply.
Skip value	Invalid values will be skipped.

ADVANCED CONFIGURATION OPTIONS

The advanced configuration of the Text Data Acquisition Module configuration profiles is handled via the `Text Data Acquisition Package.properties` configuration file, that is stored in the `C:\ProgramData\Stegmann Systems\PLA [version]` directory. Any settings that are made using the Text Data Acquisition Module configuration profiles are also saved to the `Text Data Acquisition Package.properties` file.

Important: The encoding of the `.properties` file is ISO-8859-1 (Latin-1). All non-Latin-1 characters must be entered by using `\` as escape character. Example: The special character `:` must be entered as `\:` and the special character `\` must be entered as `\\`

To configure the Text Data Acquisition Module, you need write permissions on the `Text Data Acquisition Package.properties` file. Regular Microsoft Windows user accounts do not have write permissions within the Program Data directory, so you might need an administrative account to change the configuration.

DEFINE AVAILABLE CONFIGURATION PROFILES

You can define the available configuration profiles per folder on a database. To define the available configuration profiles, add the following property to your `Text Data Acquisition Package.properties` file:

```
com.stegmannsystems.edp.dataacquisition.text.restrictions.<DB-UUID>.profile.<Folder-Key>
```

You can view the DB-UUID of the database using the PLA Database Policies (General tab). The folder key can be viewed using the PLA folder properties dialog (Document Key value).

The following example will limit the available configuration profiles for the folder with the folder-key "Folder-1" (Root Folder) and all of its subfolders, unless a subfolder defines its own set of available configuration profiles. Multiple configuration files need to be separated by a pipe symbol (`|`). Only the configuration profiles named "Text Profile1" and "Text Profile2" can be used in the Text Data Acquisition Module:

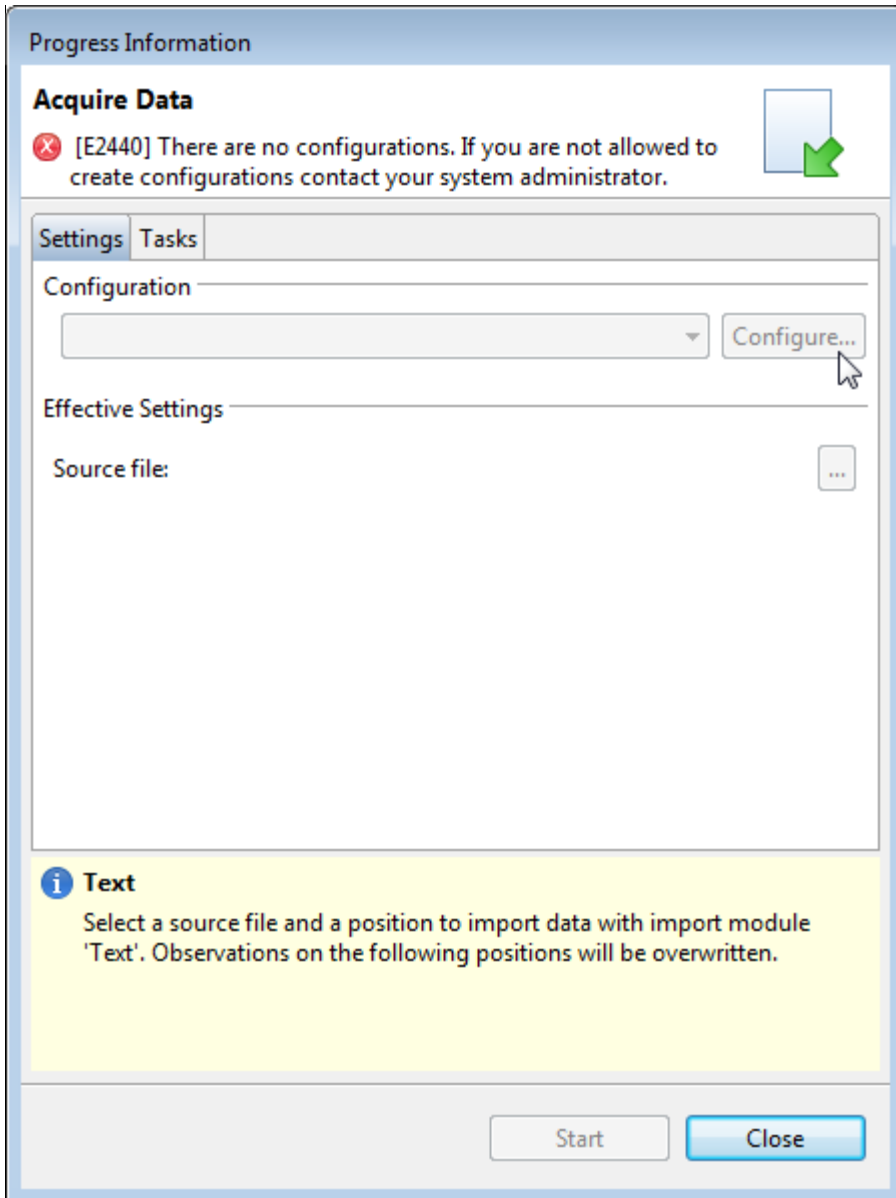
```
com.stegmannsystems.edp.dataacquisition.text.restrictions.6c868b23-d386-45f8-833b-15e8014b424f.profile.Folder-1=Text Profile1|Text Profile2
```

This setting does not prevent users from changing the available profiles. See chapter Prevent Configuration of Configuration Profiles for further information.

PREVENT CONFIGURATION OF CONFIGURATION PROFILES

By default, all users that can access the Text Data Acquisition Module can create, edit and delete configuration profiles. To prevent users from creating, editing and deleting configuration profiles, you have to add the following property to your Text Data Acquisition Package.properties file:

```
com.stegmannsystems.edp.dataacquisition.text.restrictions.canEditProfiles=false
```

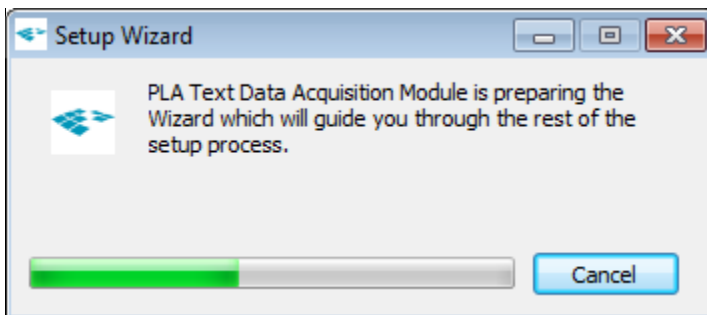


INSTALLATION

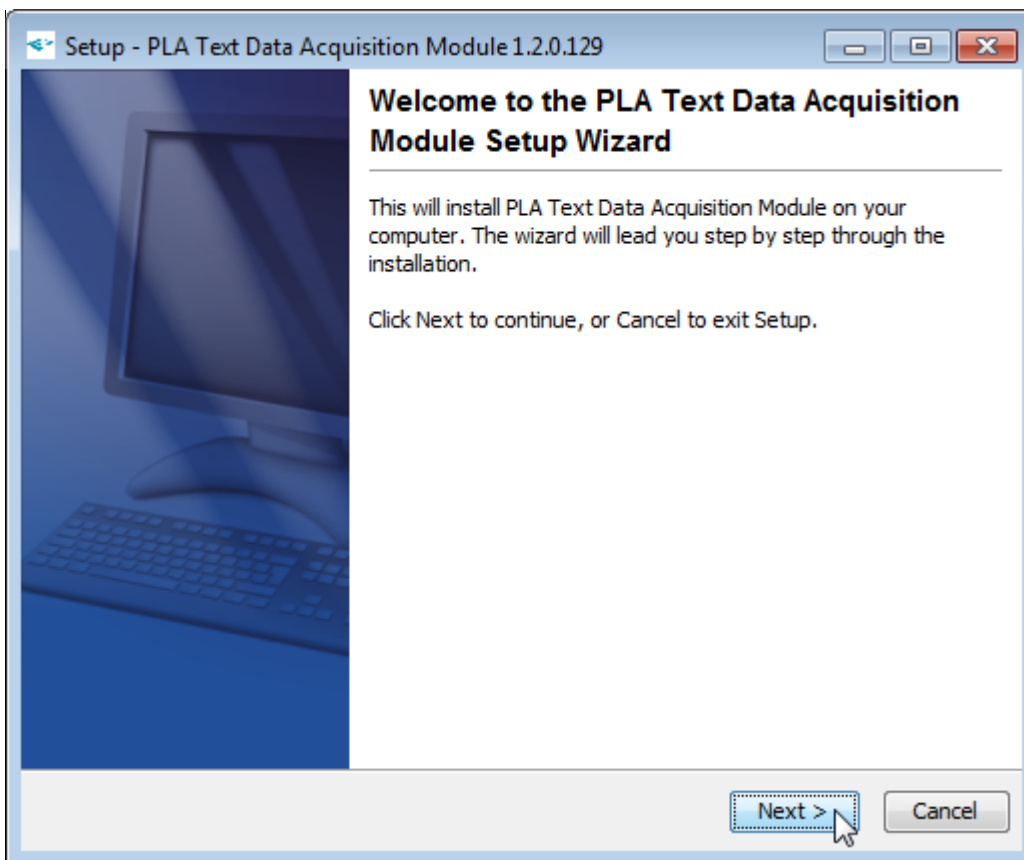
Installing the Text Data Acquisition Module consist of two parts. The Setup part will install the Text Data Acquisition Module on your local hard disk. Afterwards, it can be installed on multiple databases via the PLA Package Management.

SETUP

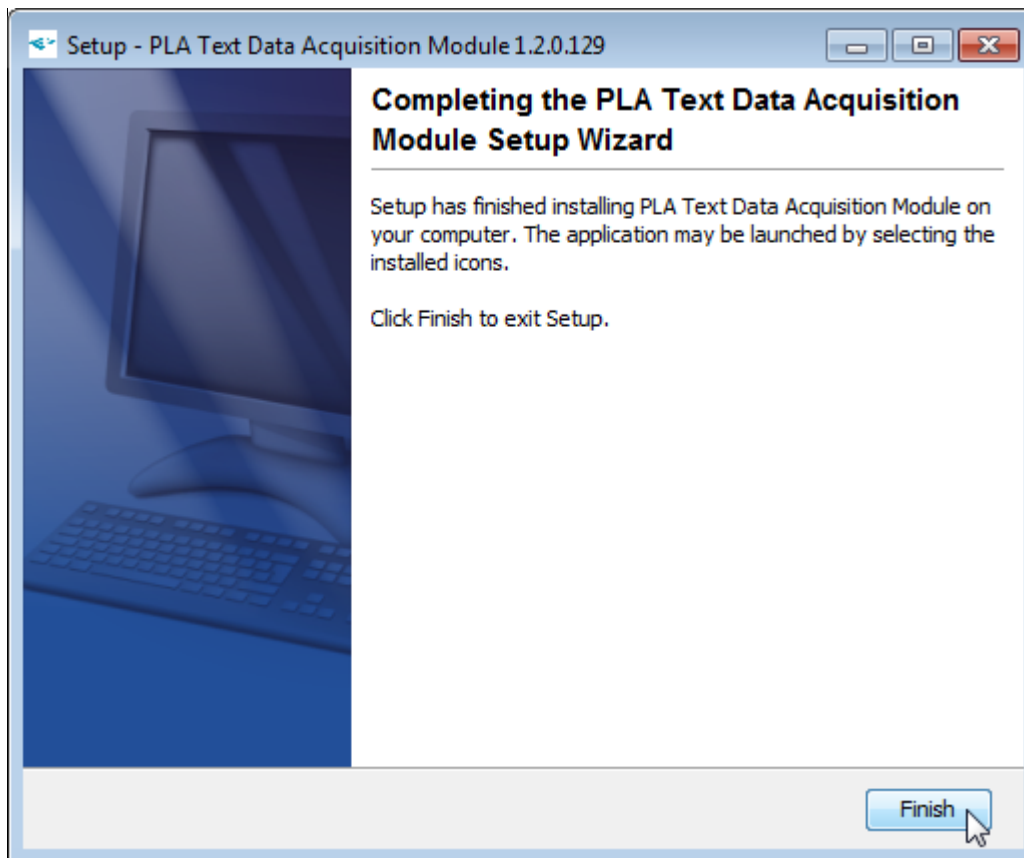
To install the Text Data Acquisition Module, start the installation program using a Microsoft Windows Administrator account.



Follow the on-screen instructions.



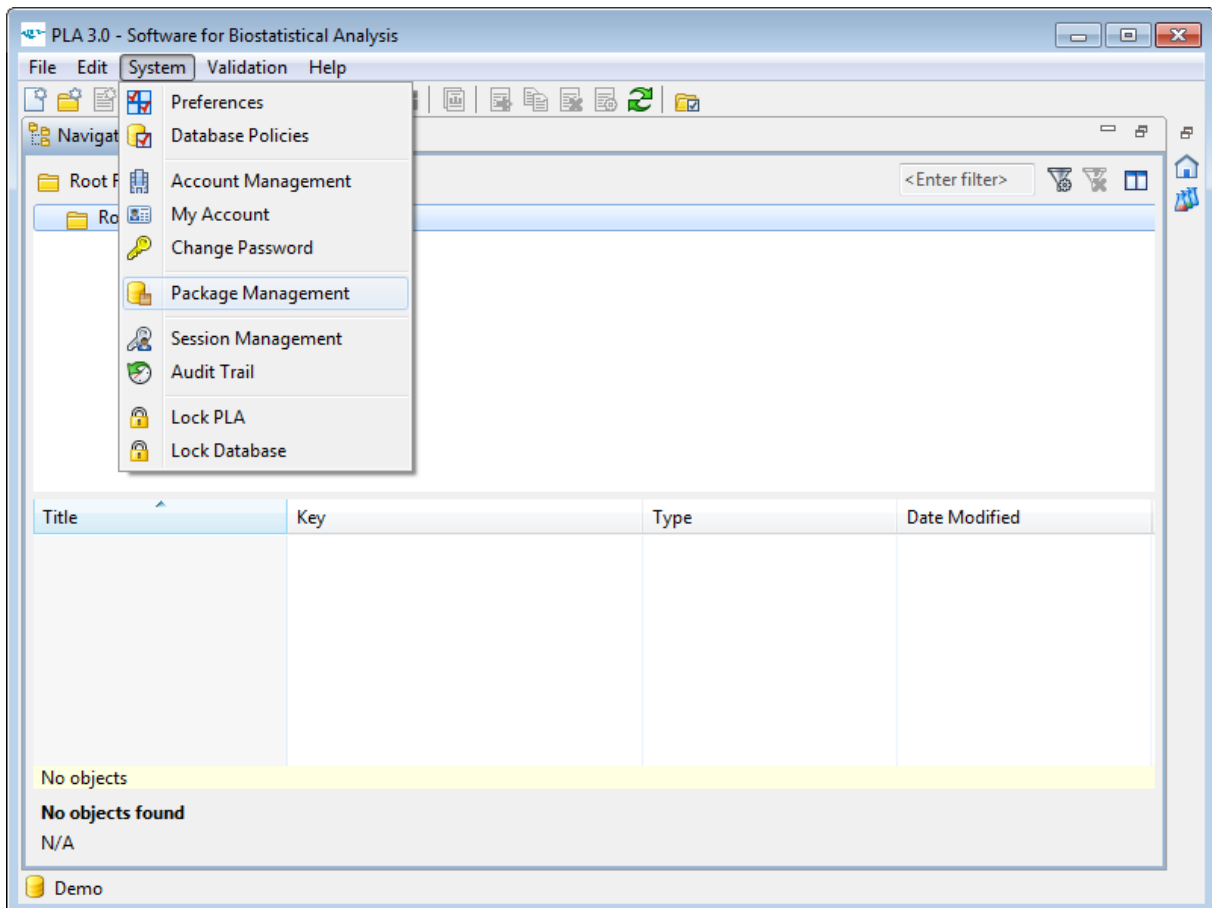
When the installation finished successfully, close the installation program using the **Finish** button.



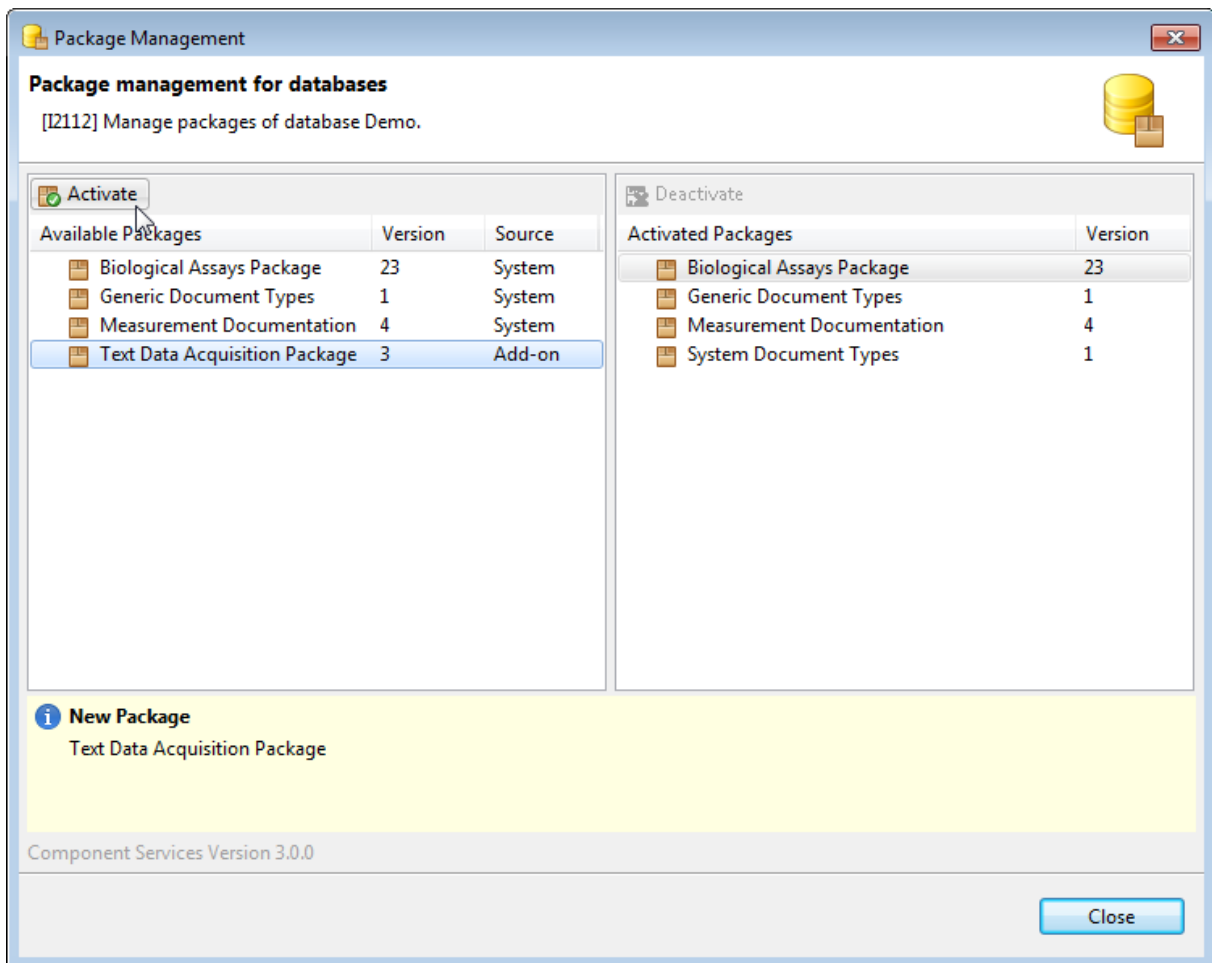
PACKAGE MANAGEMENT

To use the Text Data Acquisition Module, it has to be activated in the specific database.

To make the module available in a PLA database, a PLA user account with the permission to view and manage packages is required. Log in to PLA using a user account with the required permissions and open the **Package Management** from the **System** menu.



Select the Text Data Acquisition Module out of the list of available packages and click the **Activate** button.



Text Data Acquisition Module - User Guide

PLA will activate the selected Data Acquisition Module in the database. When the activation is complete, the package will be listed as activated package. The Data Acquisition Module can now be used to acquire data into PLA Quantitative Response Assays, using the **Acquire Data** action of the PLA document editor.

